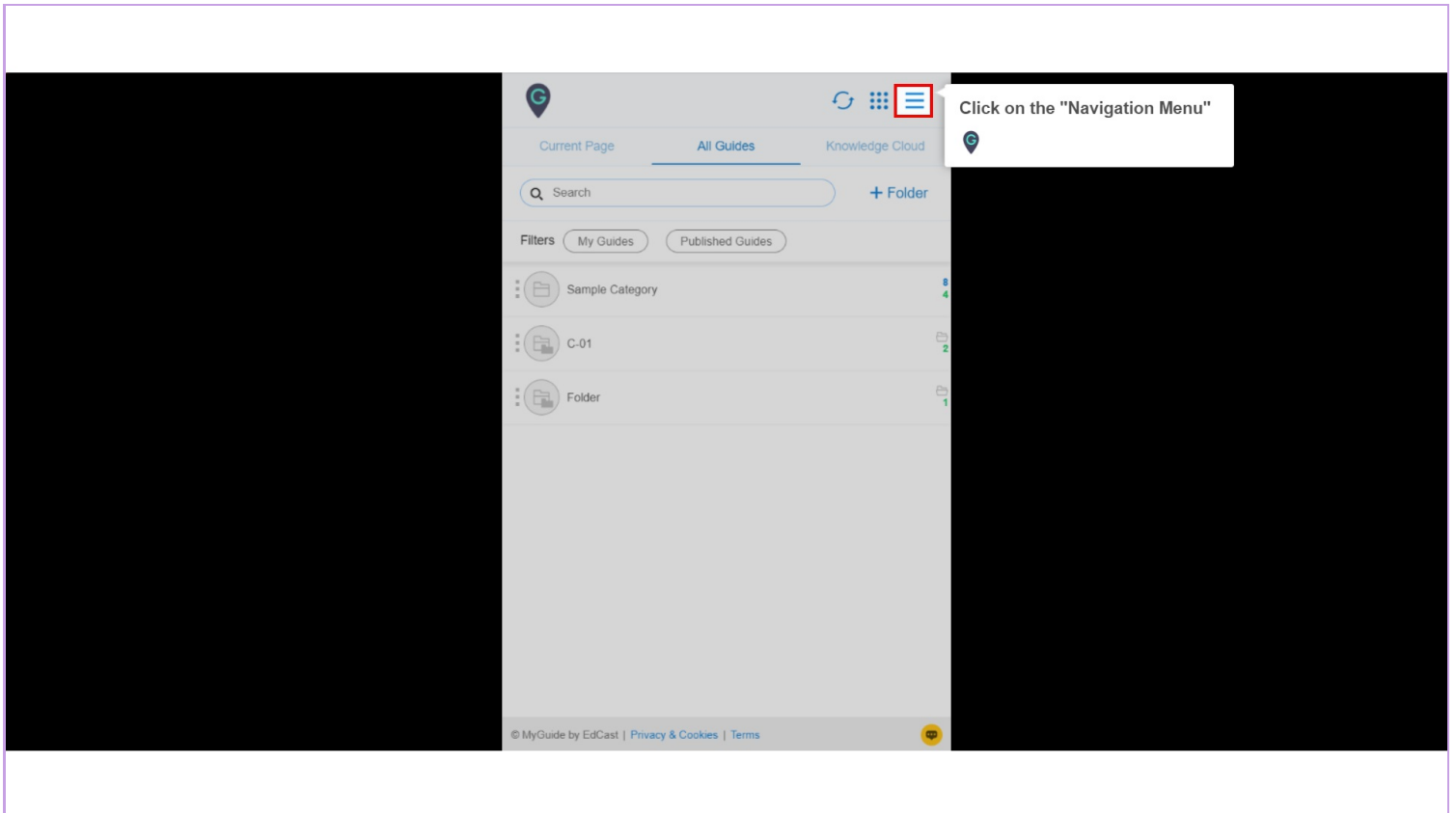




How to Configure Step Selector Settings

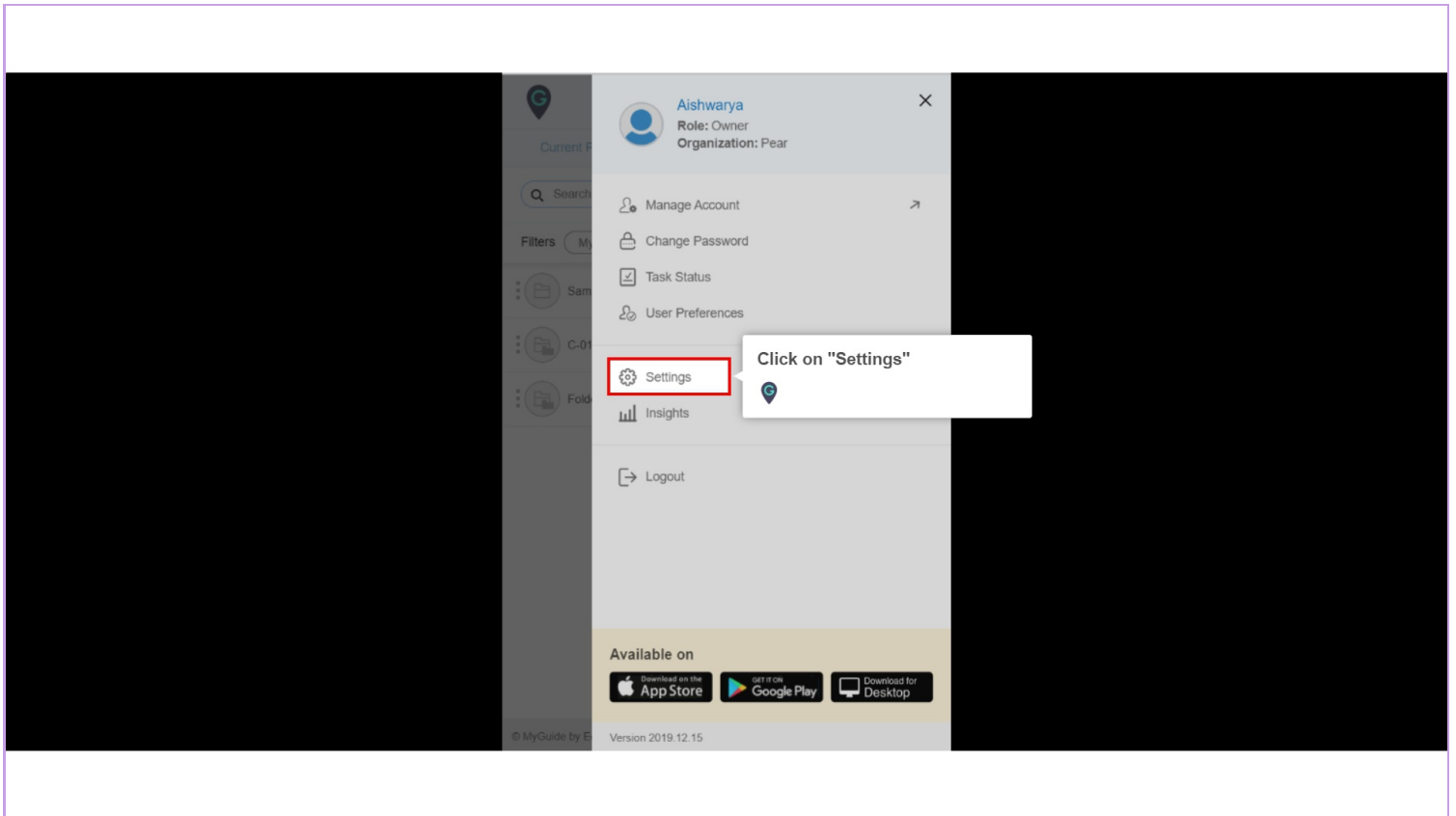
Step: 01

Click on the "Navigation Menu"



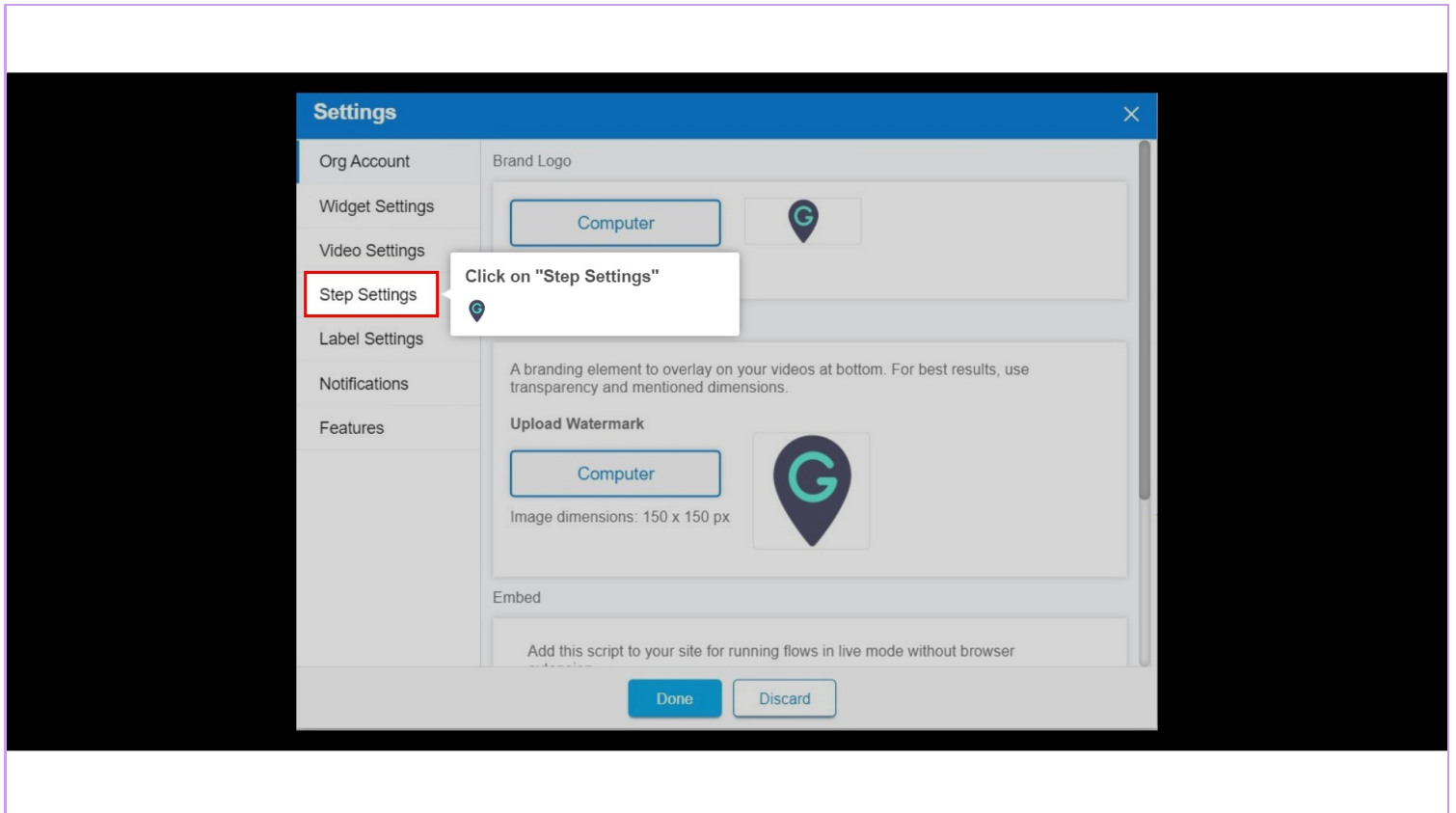
Step: 02

Click on "Settings"



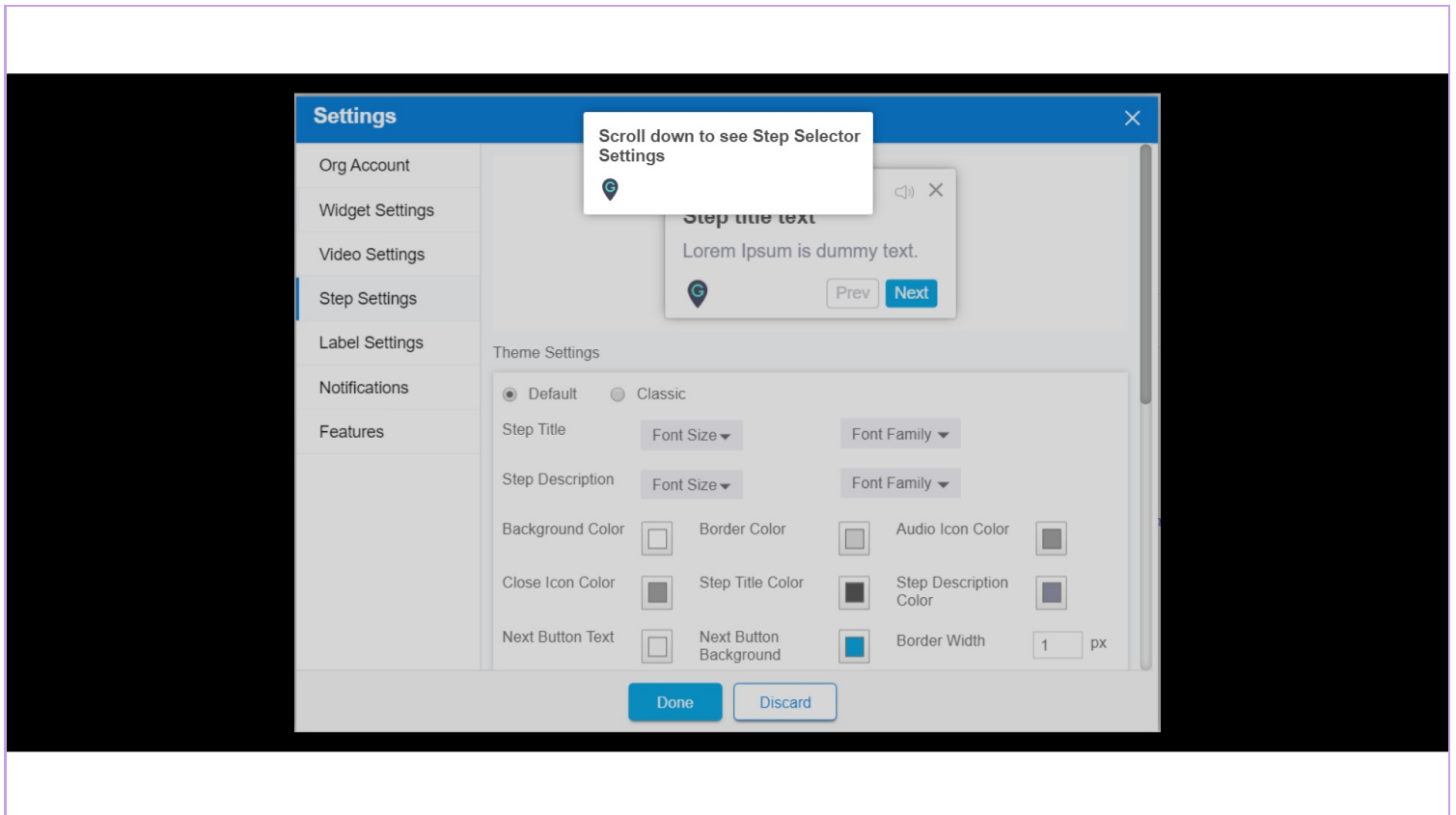
Step: 03

Click on "Step Settings"



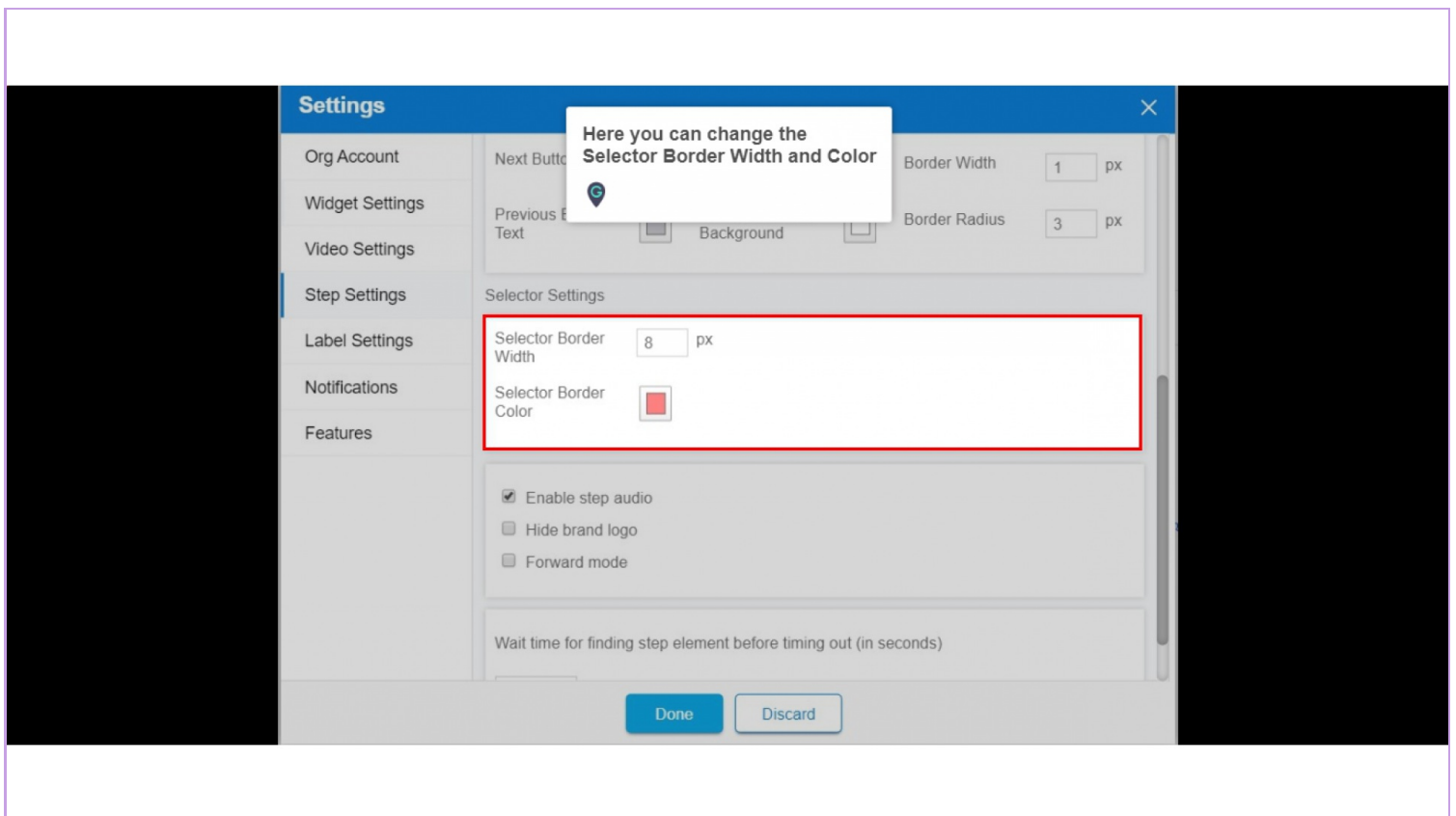
Step: 04

Scroll down to see Step Selector Settings



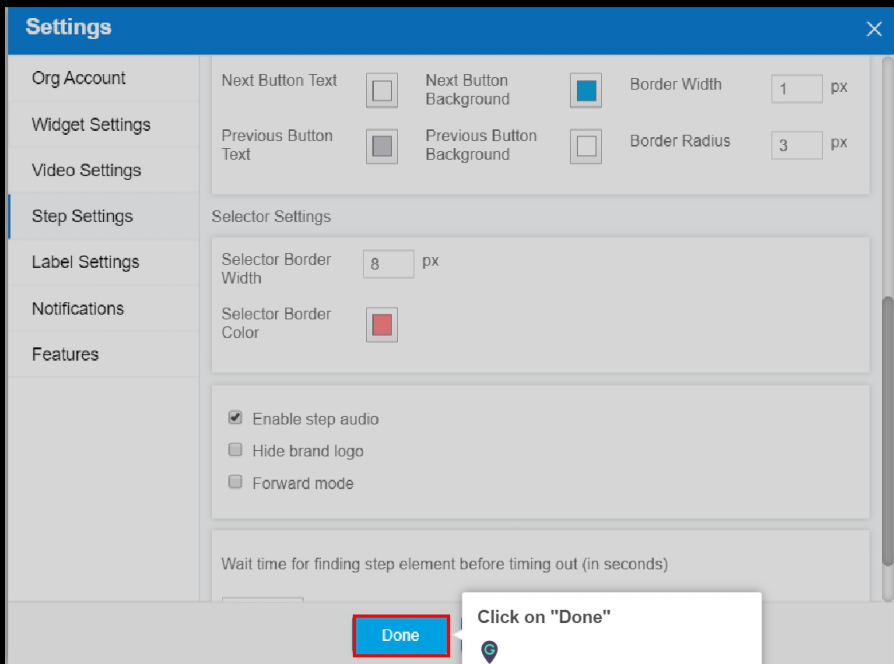
Step: 05

Here you can change the Selector Border Width and Color



Step: 06

Click on "Done"



Thank You!

myguide.org