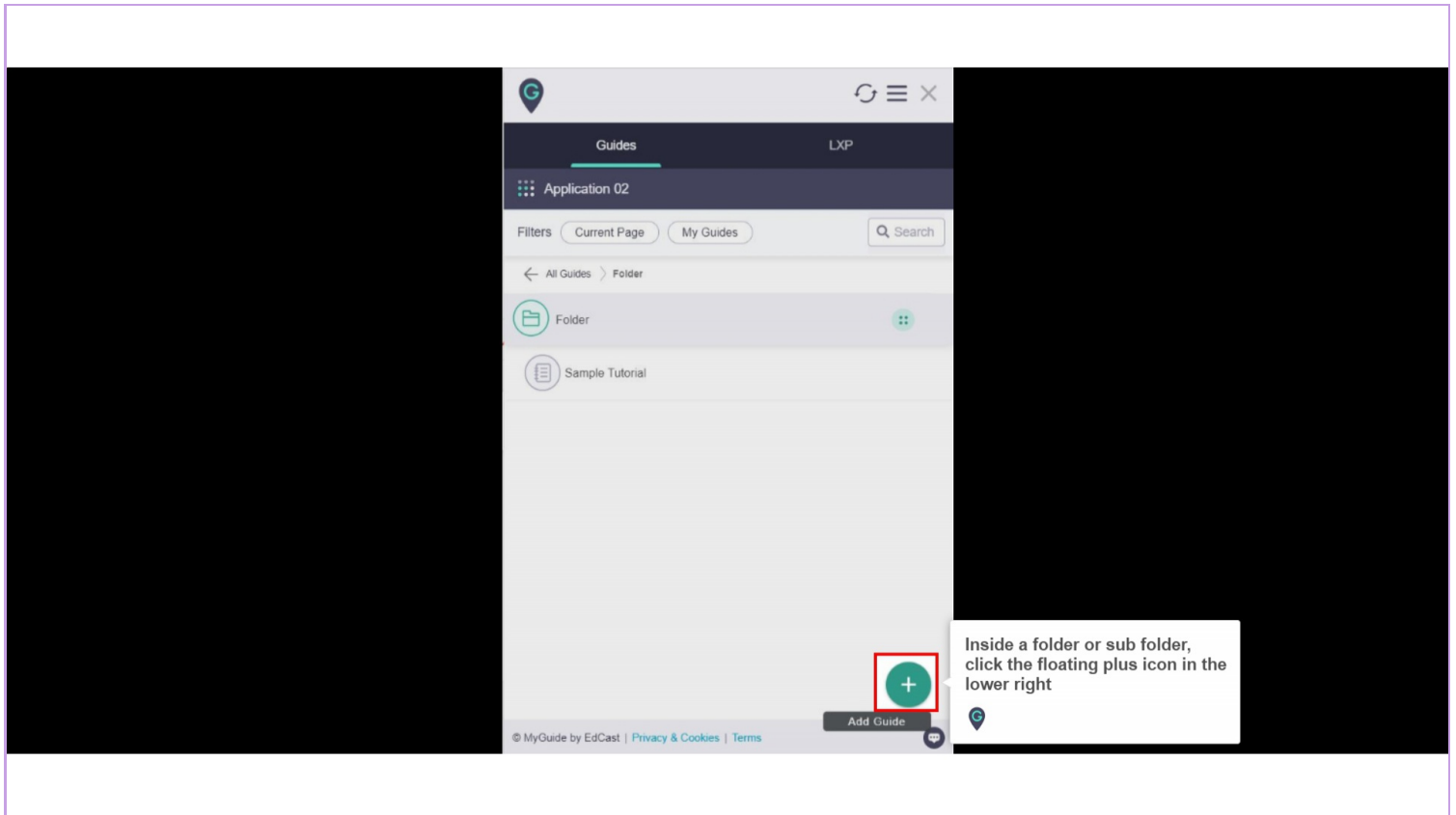




Add a Workflow Guide

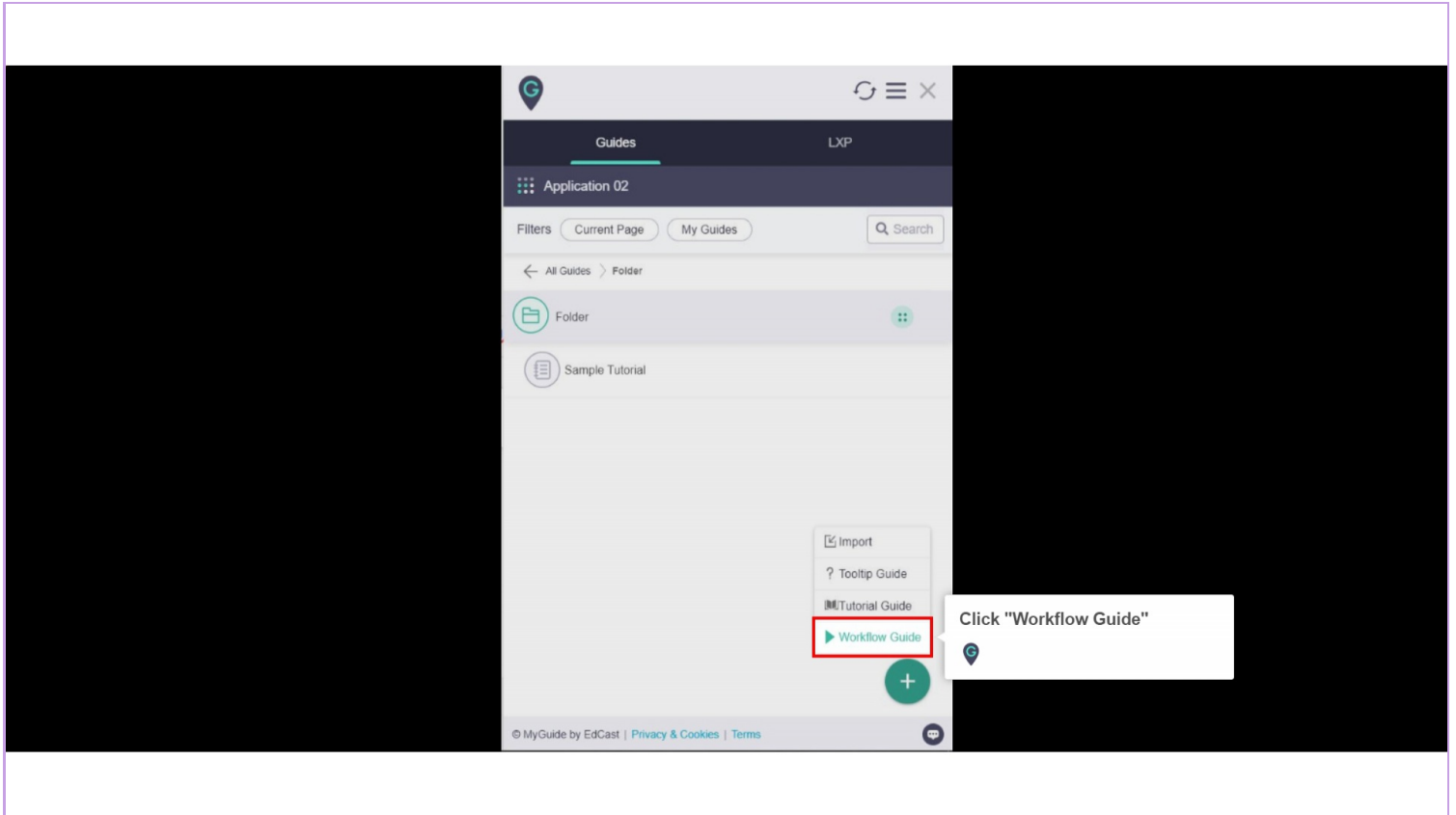
Step: 01

Inside a folder or sub folder, click the floating plus icon in the lower right



Step: 02

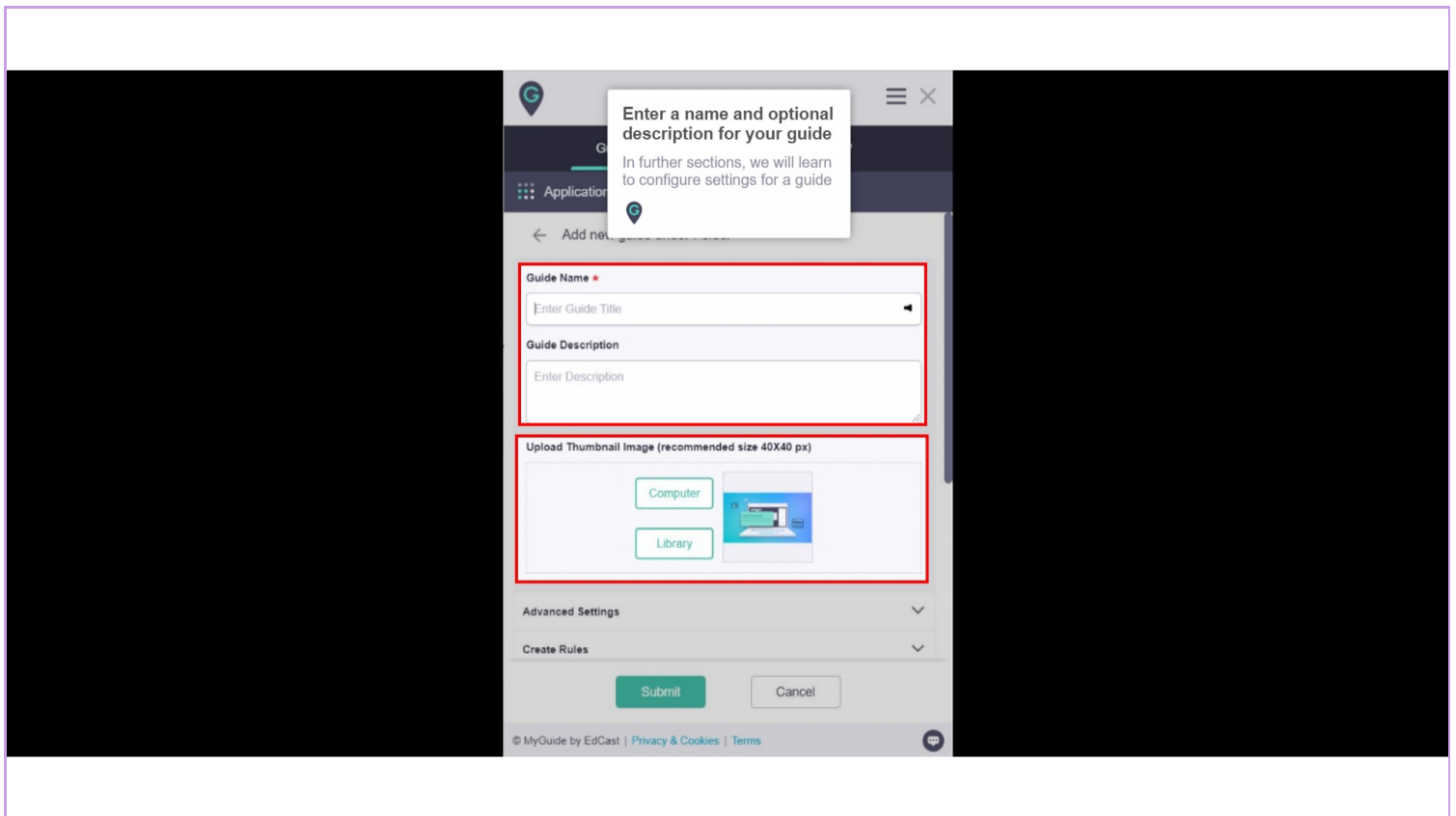
Click "Workflow Guide"



Step: 03

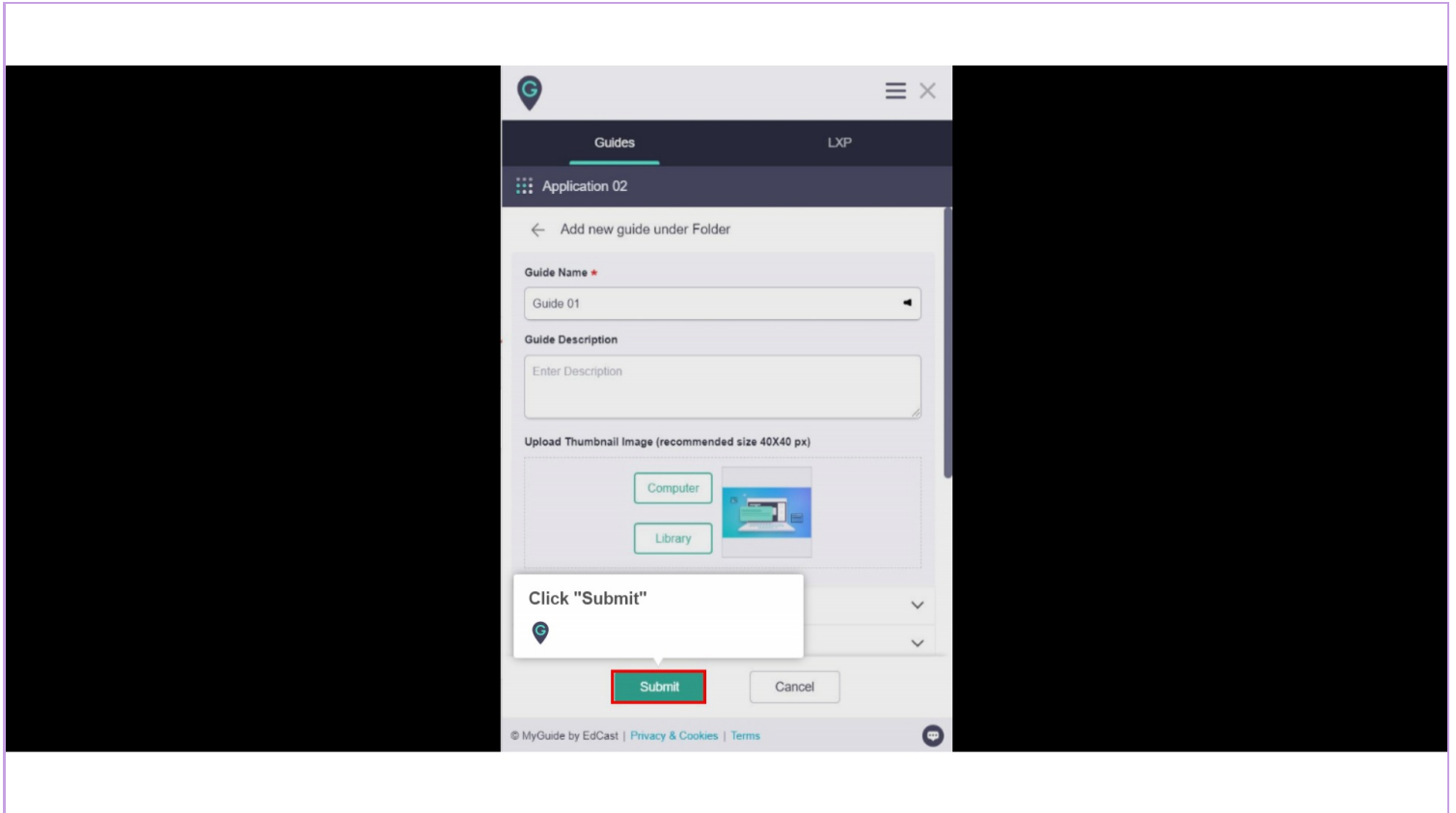
Enter a name and optional description for your guide

In further sections, we will learn to configure settings for a guide



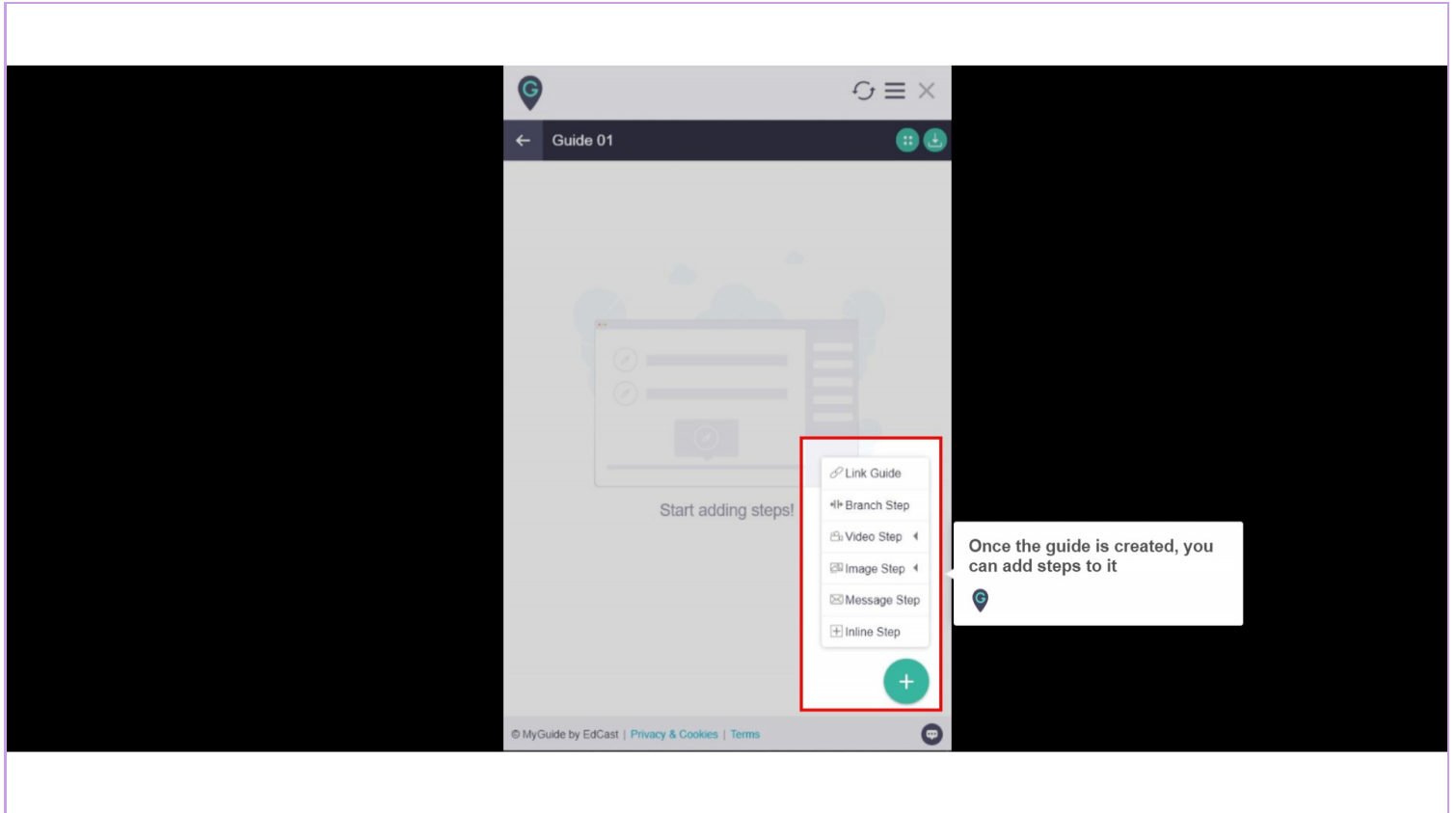
Step: 04

Click "Submit"



Step: 05

Once the guide is created, you can add steps to it



Thank You!

myguide.org