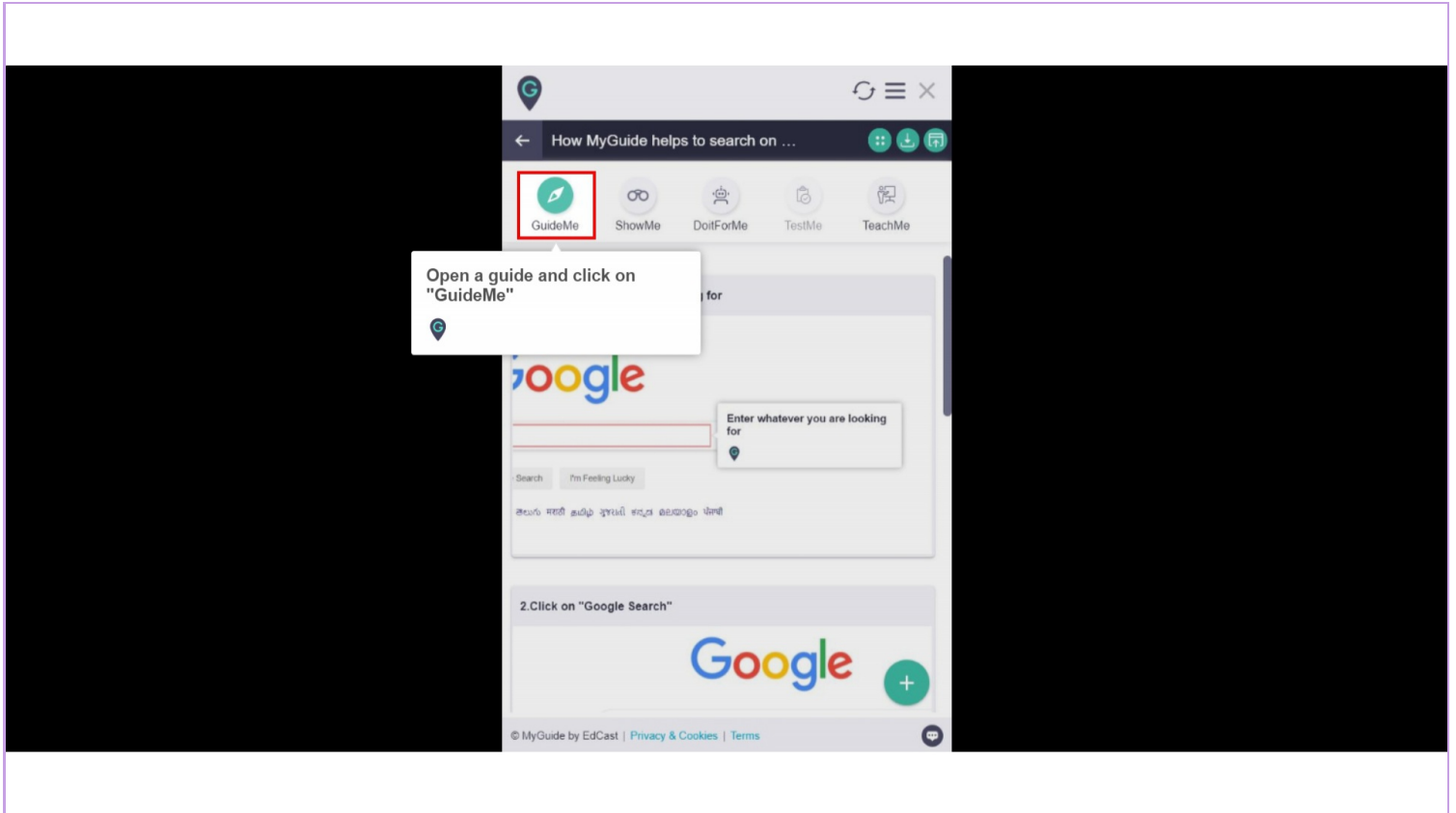




GuideMe

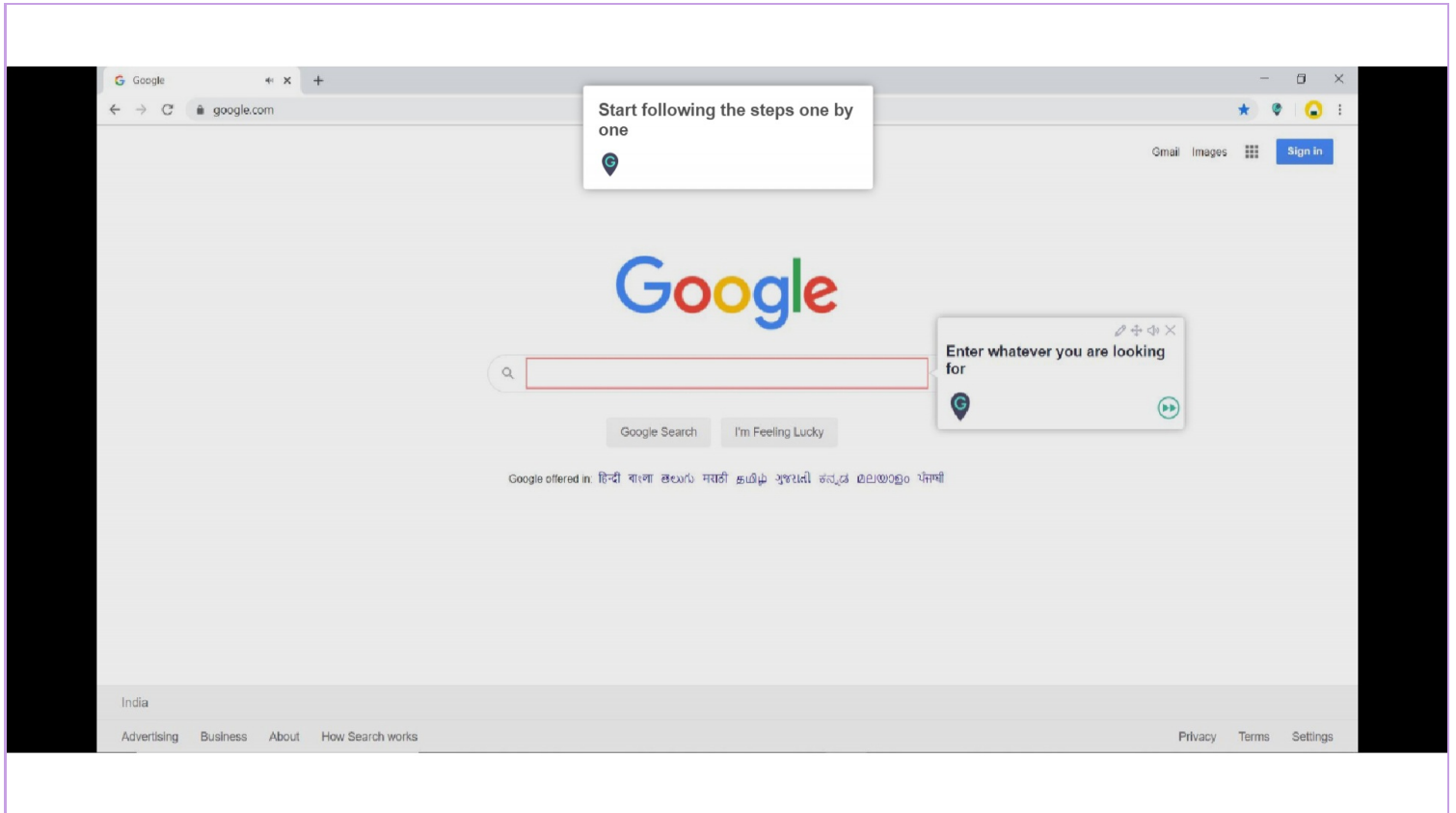
Step: 01

1) Open a guide and click on "GuideMe"



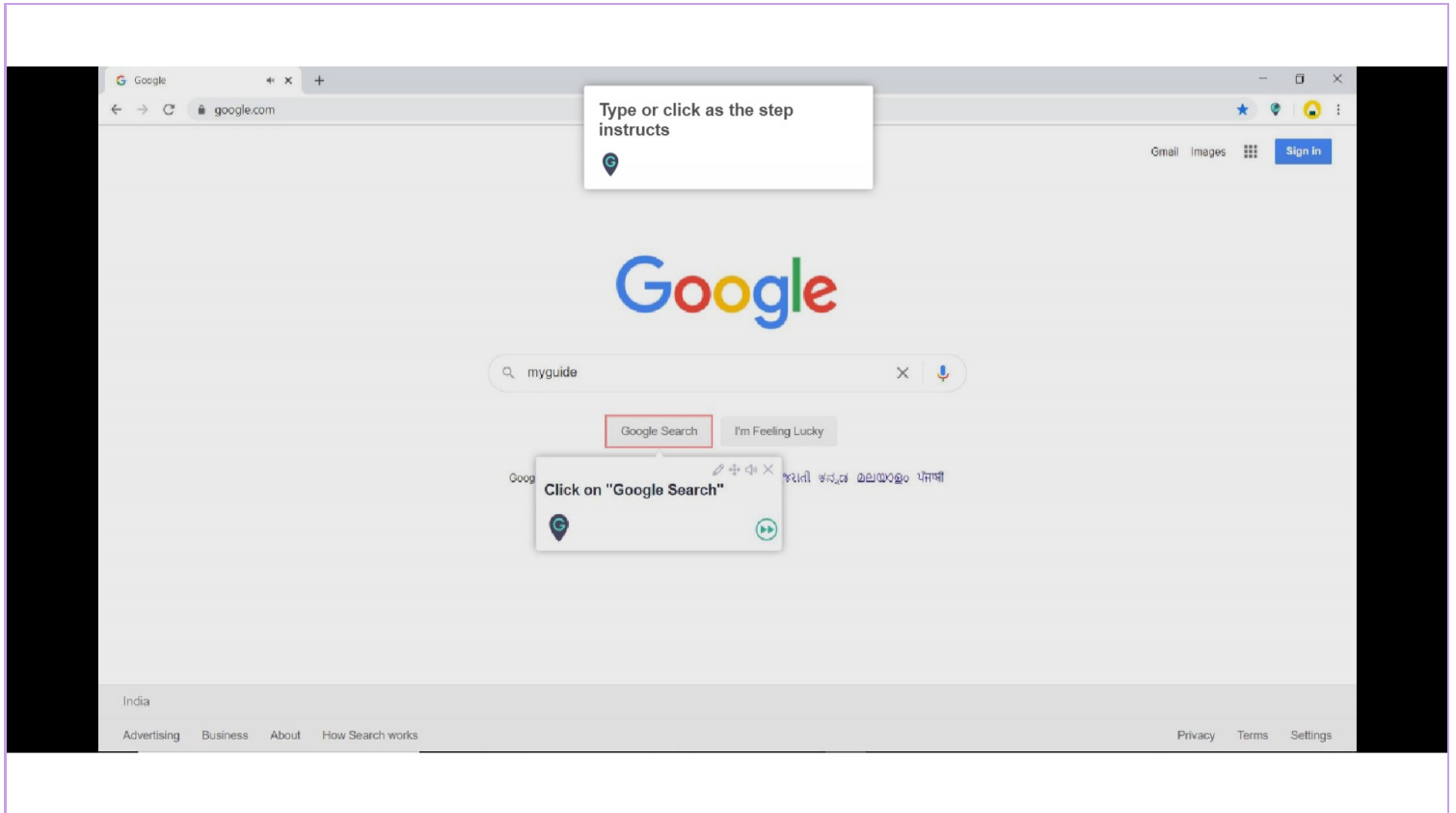
Step: 02

Start following the steps one by one



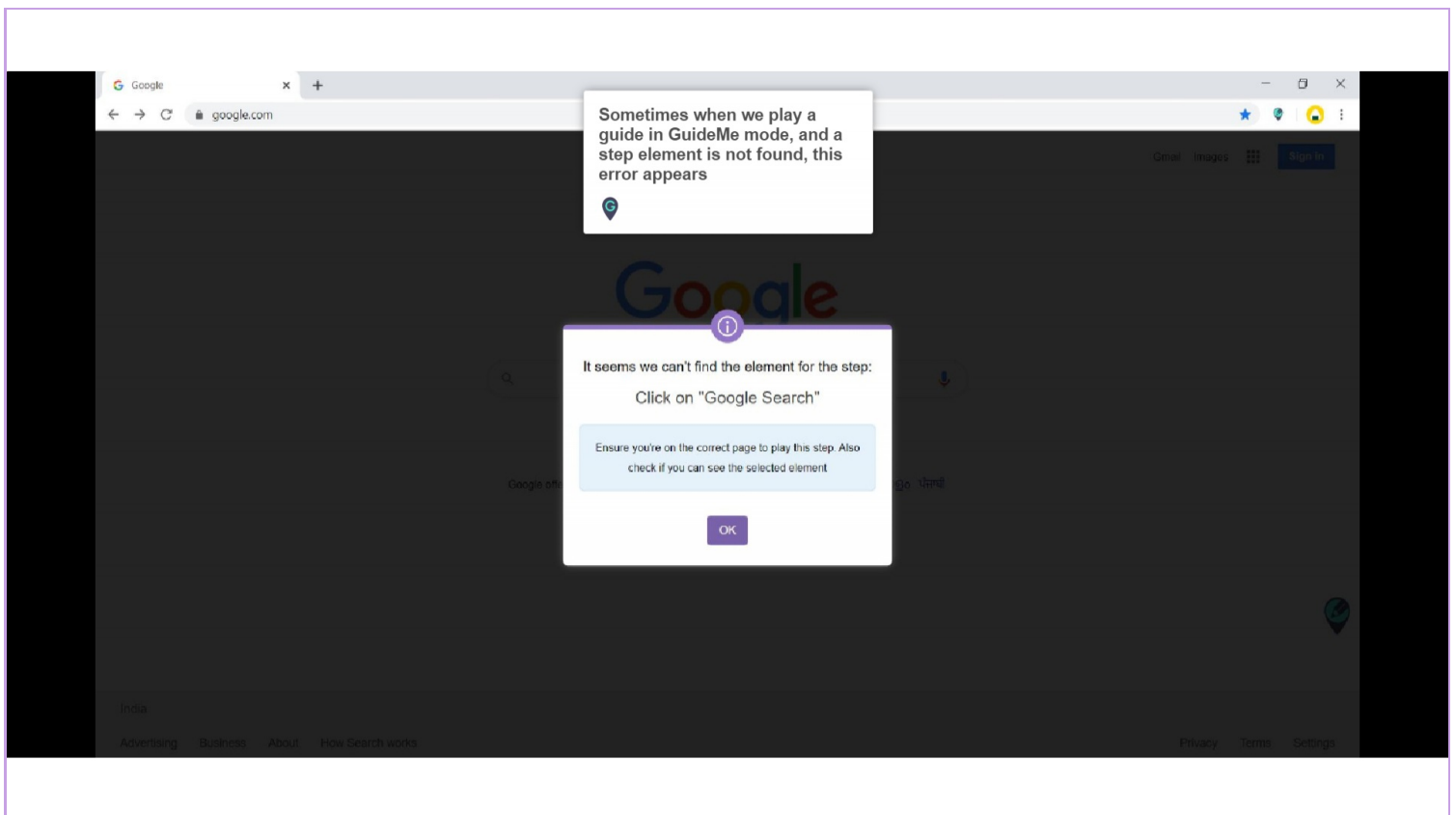
Step: 03

Type or click as the step instructs



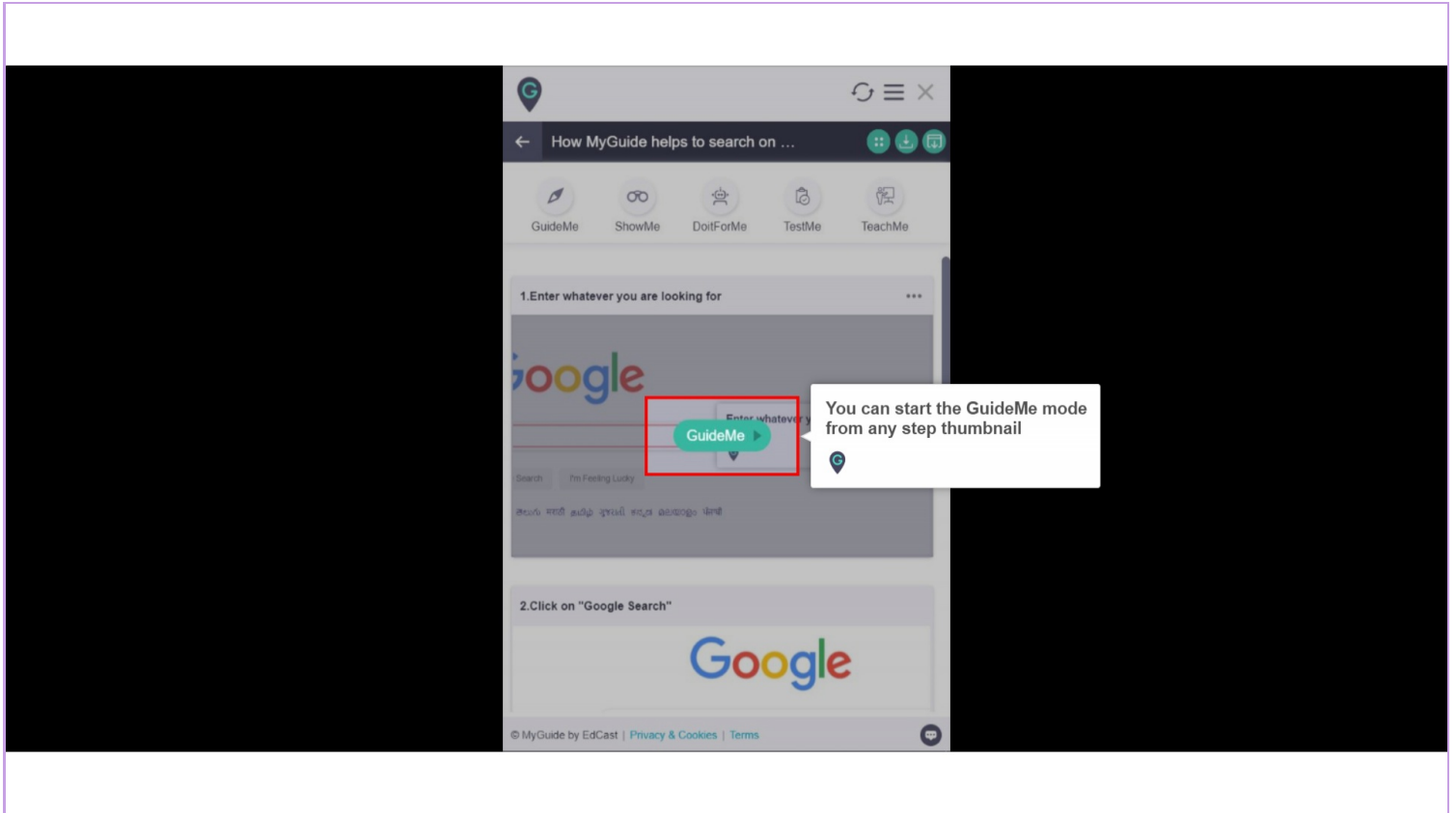
Step: 04

Sometimes when we play a guide in GuideMe mode, and a step element is not found, this error appears



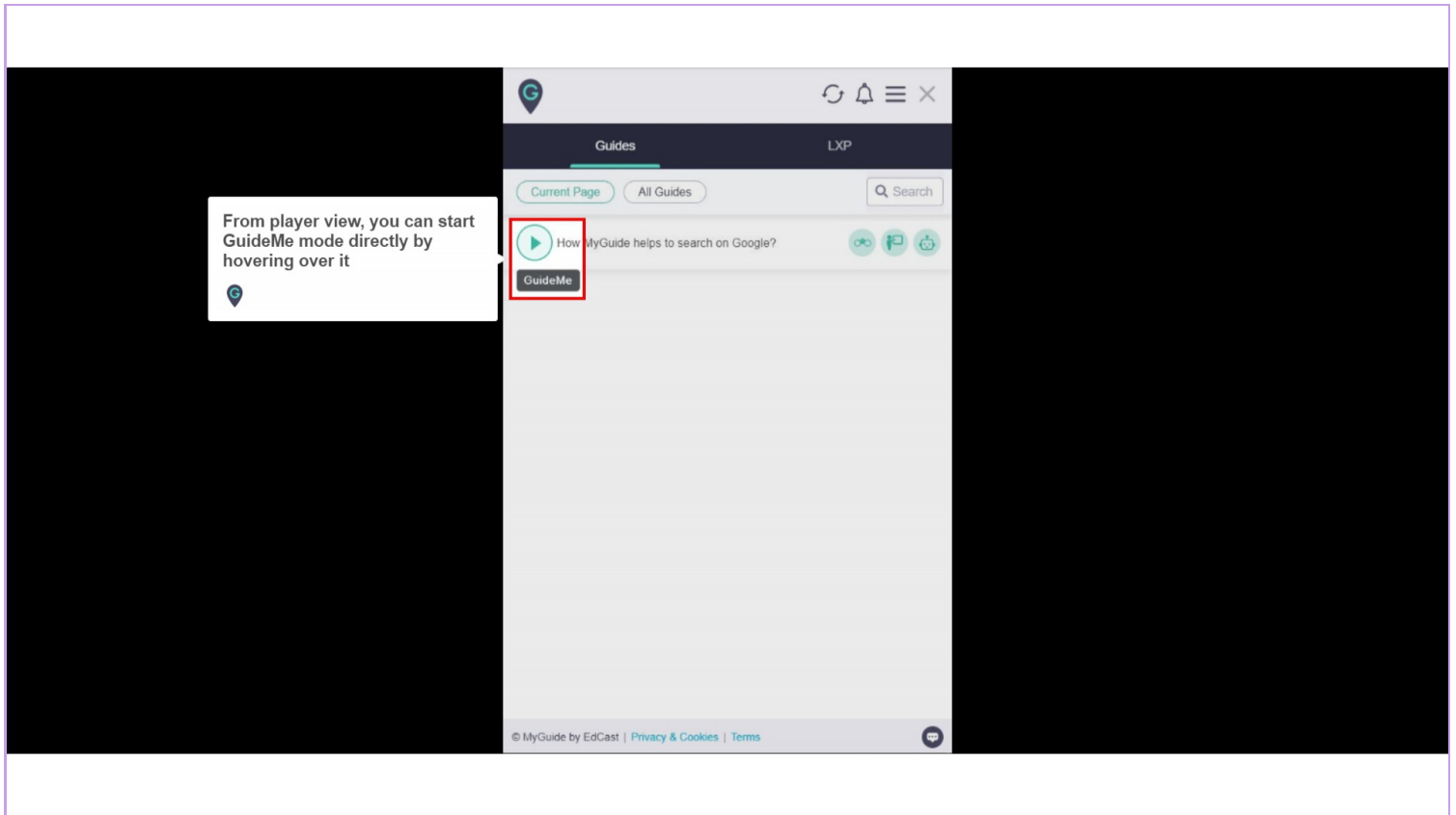
Step: 05

1) You can start the GuideMe mode from any step thumbnail



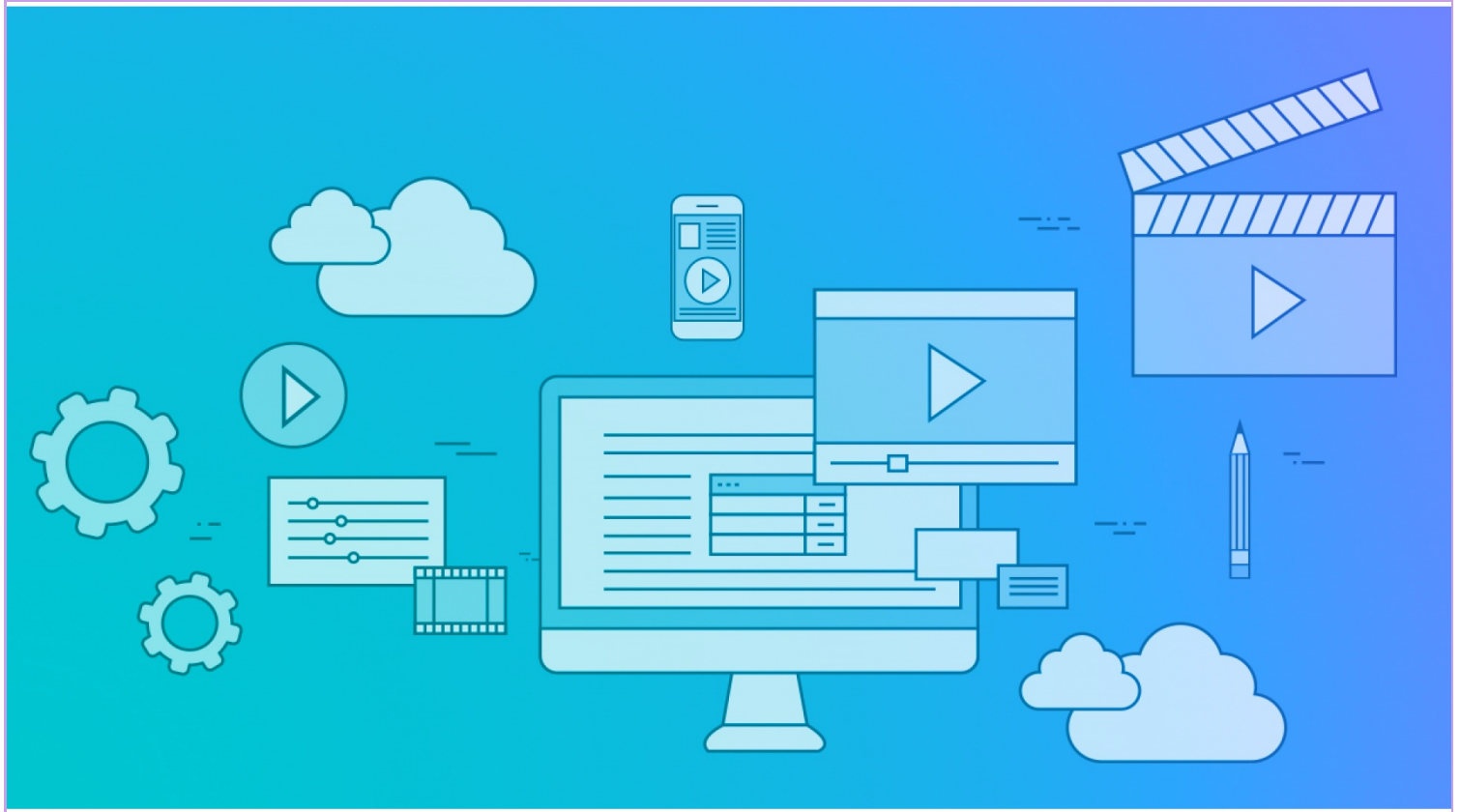
Step: 06

1) From player view, you can start GuideMe mode directly by hovering over it



Step: 07

How GuideMe works



Thank you

myguide.org