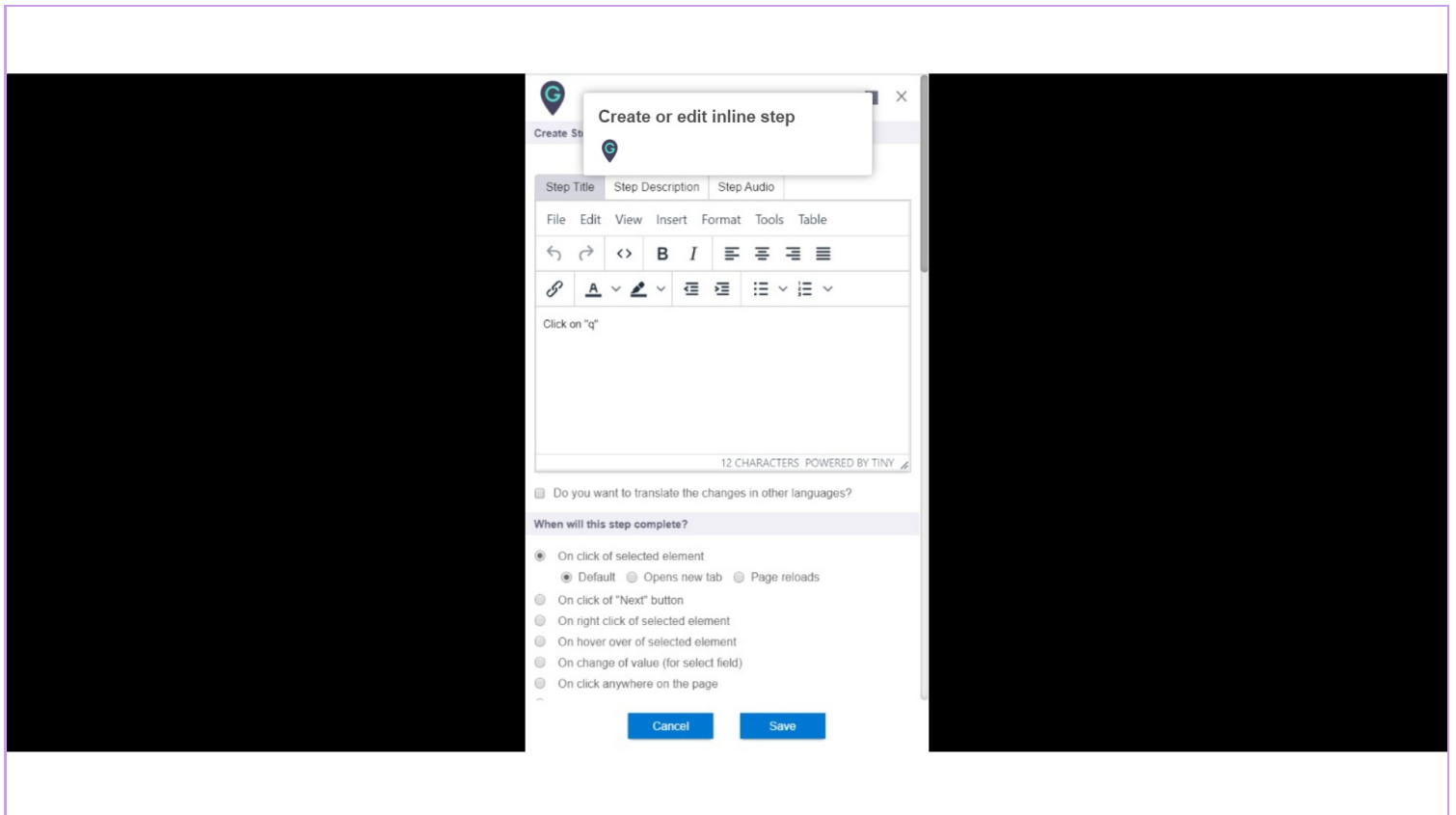




How does Ignore Text feature works

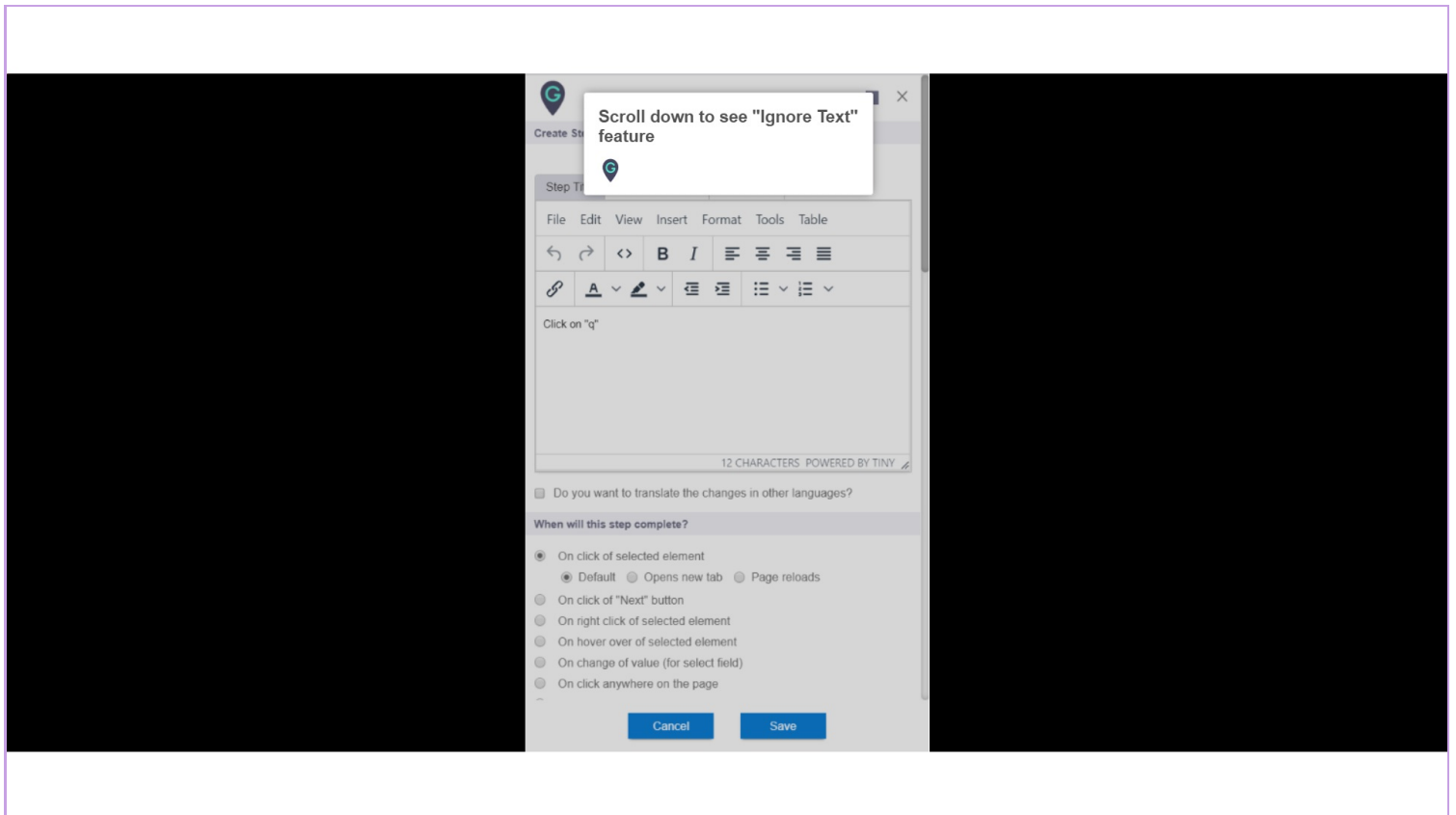
Step: 01

Create or edit inline step



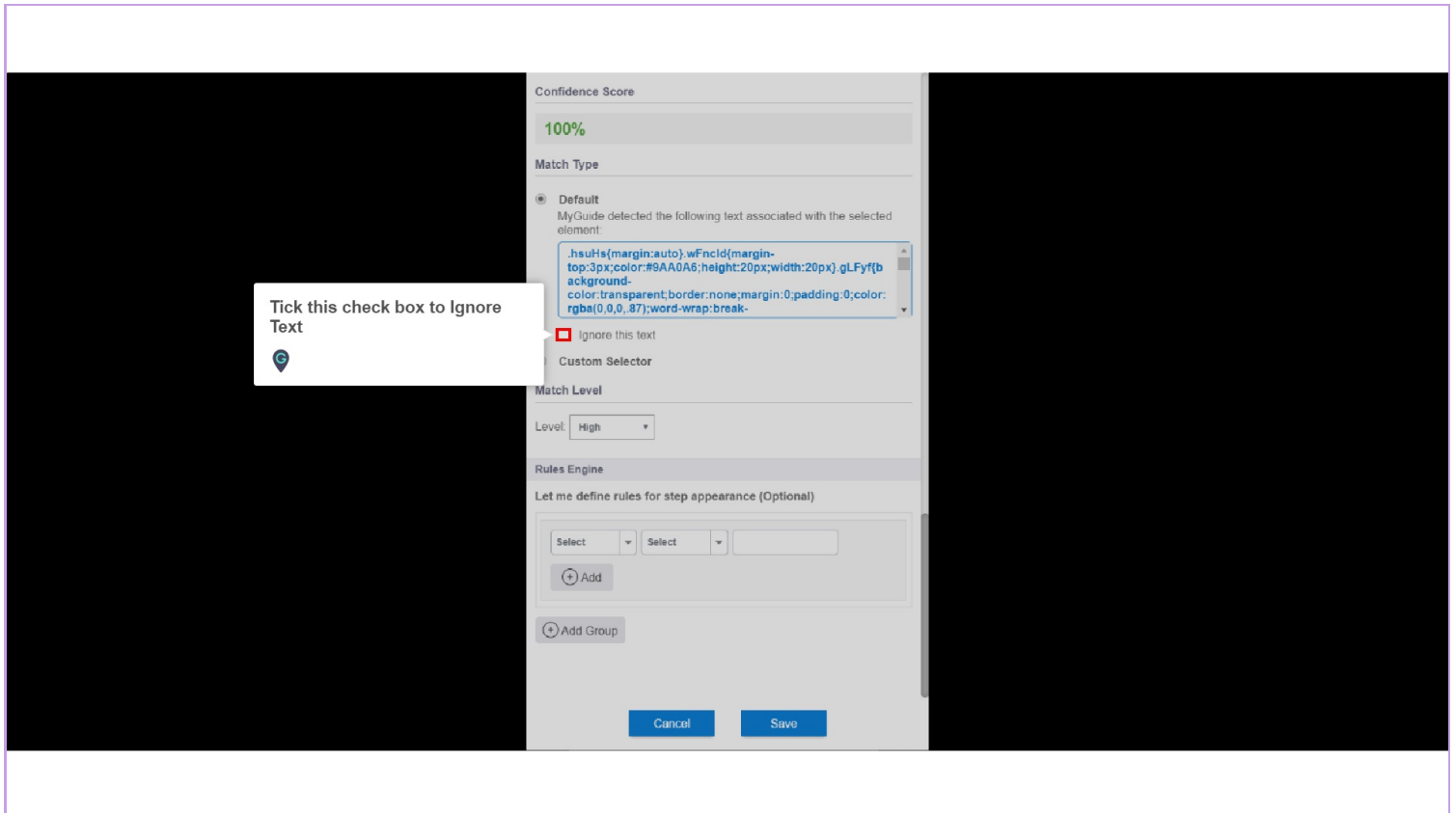
Step: 02

Scroll down to see "Ignore Text" feature



Step: 03

Tick this check box to Ignore Text



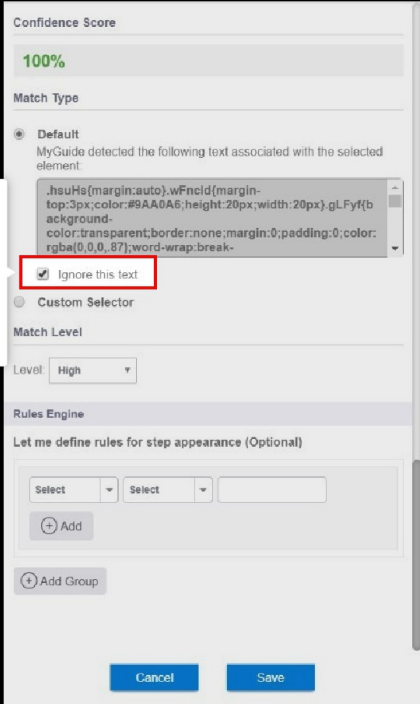
The screenshot displays the MyGuide configuration interface. A dialog box is overlaid on the left side of the interface, containing the text "Tick this check box to Ignore Text" and a location pin icon. The background interface shows the following settings:

- Confidence Score:** 100%
- Match Type:** Default (selected). MyGuide detected the following text associated with the selected element:

```
.JsuHs{margin:auto;wFncId(margin-top:3px;color:#9AA0A6;height:20px;width:20px).gLFyf{background-color:transparent;border:none;margin:0;padding:0;color:rgba(0,0,0,.87);word-wrap:break-
```
- Ignore this text:** (unchecked)
- Custom Selector:** (empty)
- Match Level:** Level: High
- Rules Engine:** Let me define rules for step appearance (Optional). Includes "Select" dropdowns, "Add" button, and "Add Group" button.
- Buttons:** Cancel and Save.

Step: 04

By selecting this checkbox, the matching algorithm will not search for that element on the basis of text and it will use other parameters to search the same element on the web page



The screenshot displays a configuration window for a search engine. The 'Confidence Score' is set to 100%. Under 'Match Type', the 'Default' option is selected, with a note stating 'MyGuide detected the following text associated with the selected element:'. A text box contains the following CSS code: `.jsuHs{margin:auto},wFncld{margin-top:3px;color:#9AA0A6;height:20px;width:20px};gL.Fyf{background-color:transparent;border:none;margin:0;padding:0;color:rgba(0,0,0,.87);word-wrap:break-}`. The checkbox 'Ignore this text' is checked and highlighted with a red box. Below this, the 'Match Level' is set to 'High'. The 'Rules Engine' section is titled 'Let me define rules for step appearance (Optional)' and includes two 'Select' dropdown menus, an 'Add' button, and an 'Add Group' button. At the bottom are 'Cancel' and 'Save' buttons.

By selecting this checkbox, the matching algorithm will not search for that element on the basis of text and it will use other parameters to search the same element on the web page

Thank You!

myguide.org