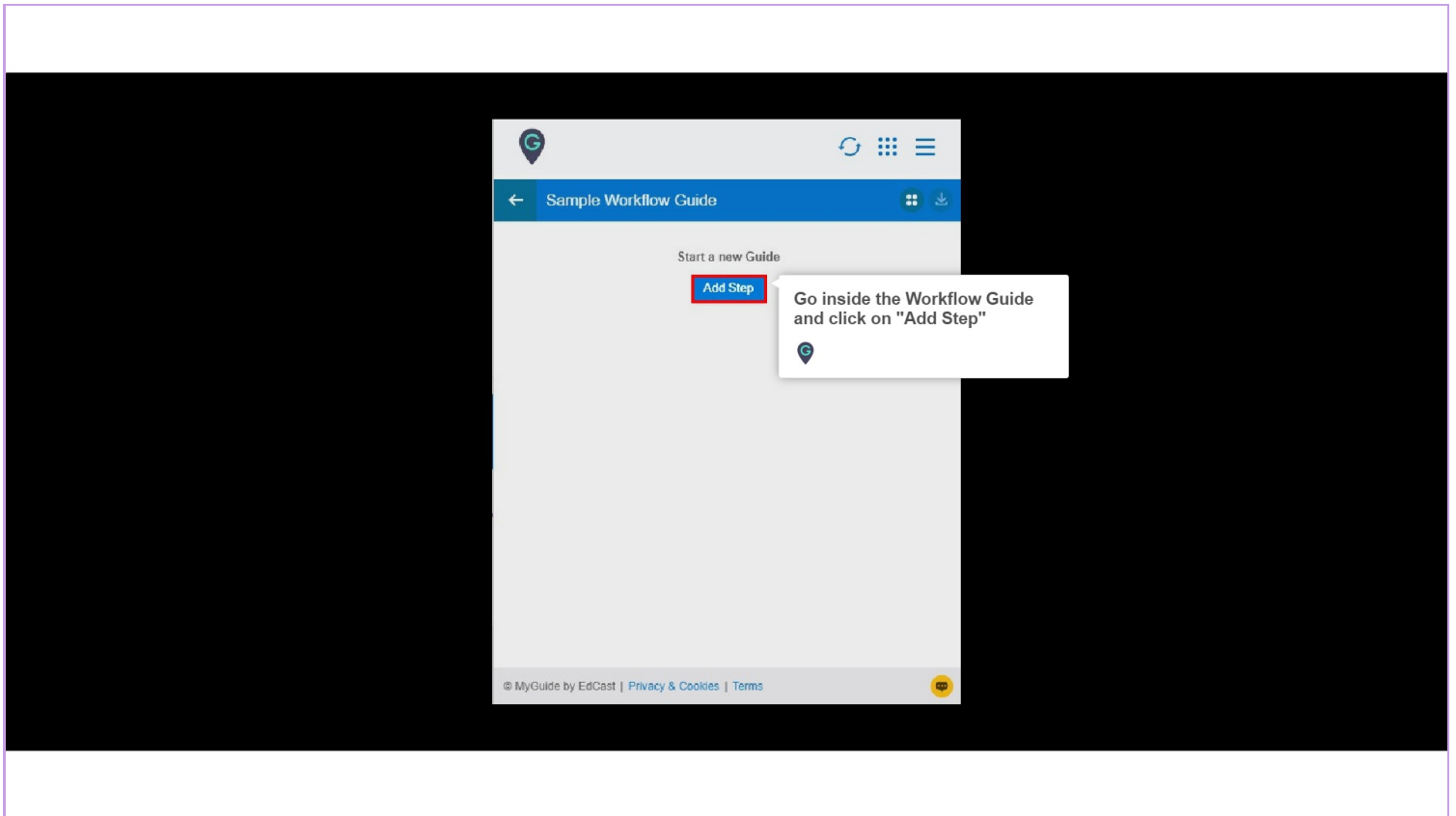




How to Define Popup Width and Height

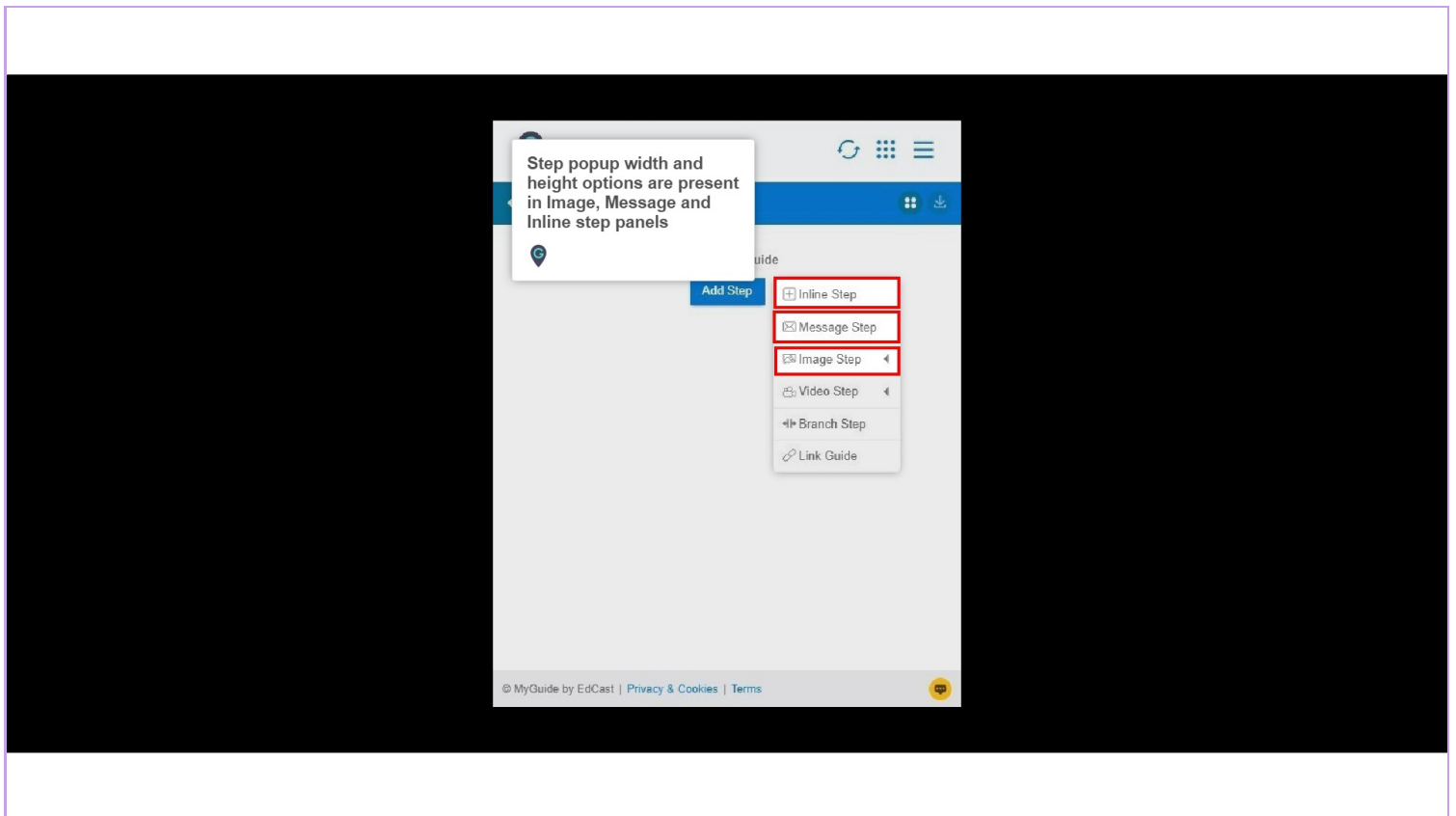
Step: 01

Go inside the Workflow Guide and click on "Add Step"



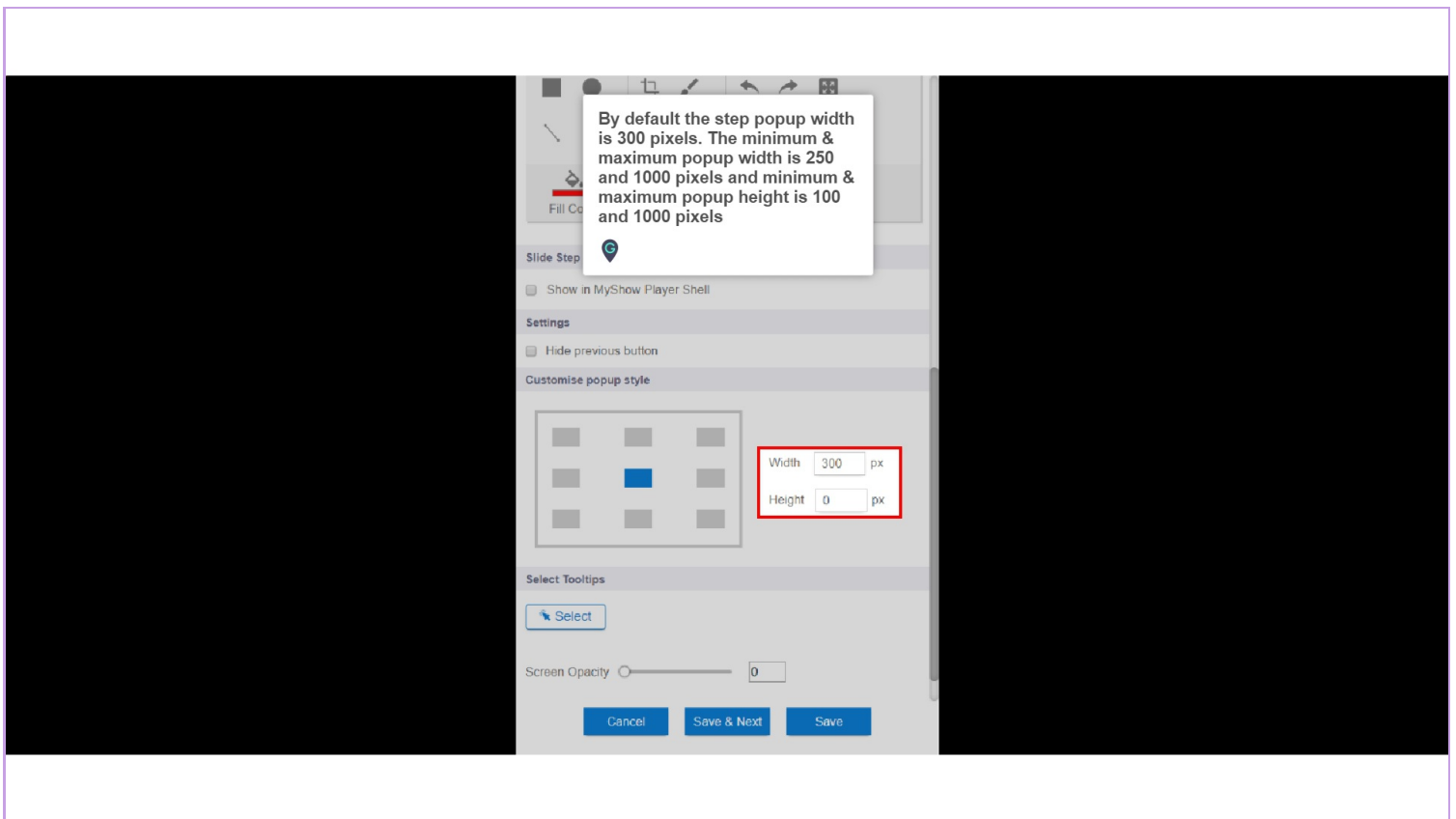
Step: 02

Step popup width and height options are present in Image, Message and Inline step panels



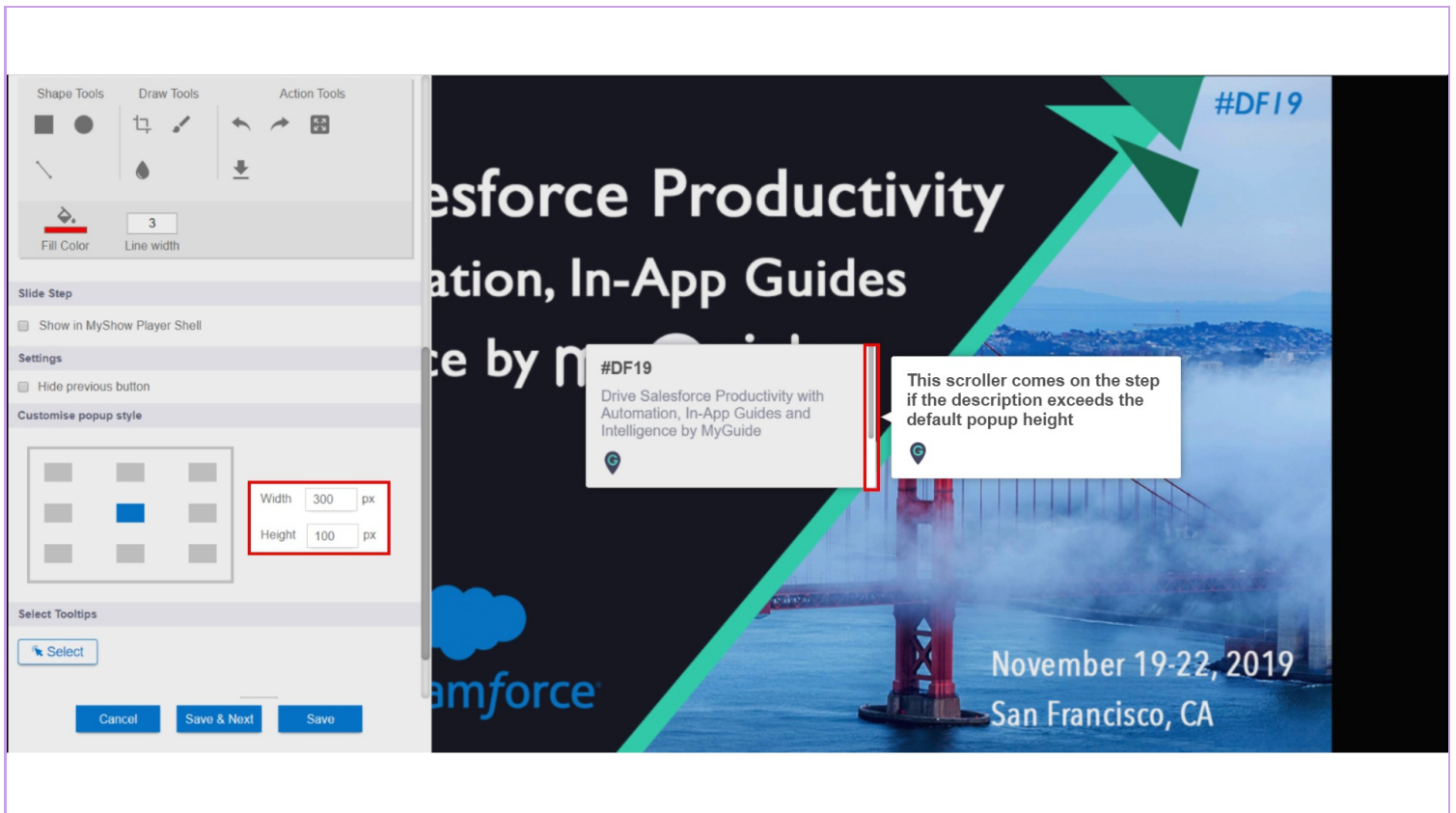
Step: 03

By default the step popup width is 300 pixels. The minimum & maximum popup width is 250 and 1000 pixels and minimum & maximum popup height is 100 and 1000 pixels



Step: 04

This scroller comes on the step if the description exceeds the default popup height



Step: 05

This is how the step looks when popup width and height are at maximum

This is how the step looks when popup width and height are at maximum

#DF19
Drive Salesforce Productivity with Automation, In-App Guides and Intelligence by MyGuide

Drive Salesforce Productivity with Automation, In-App Guides & Intelligence by MyGuide

Width 1000 px
Height 1000 px

Cancel Save & Next Save

Thank You!

myguide.org