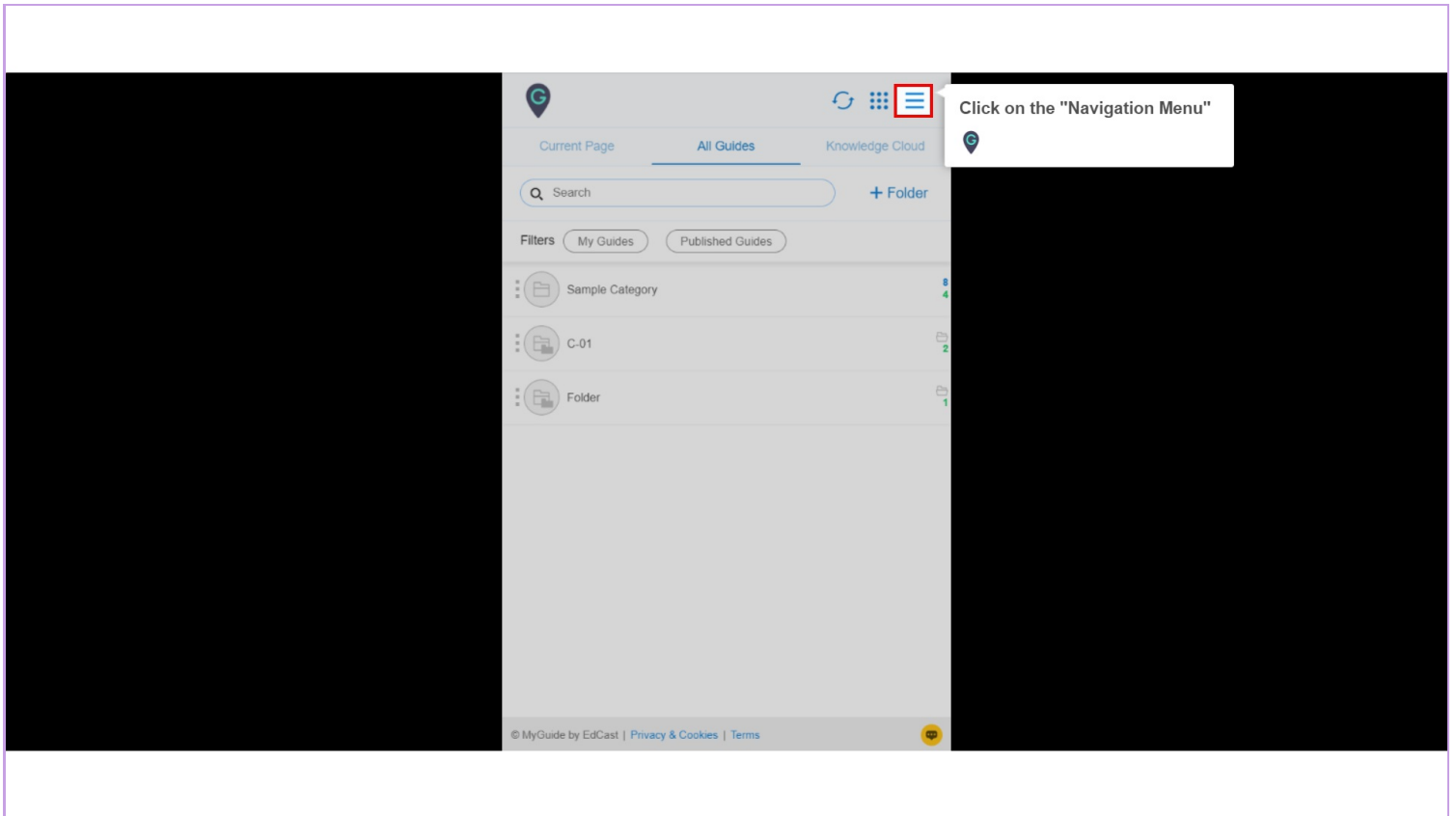




How to Manage Labels Settings

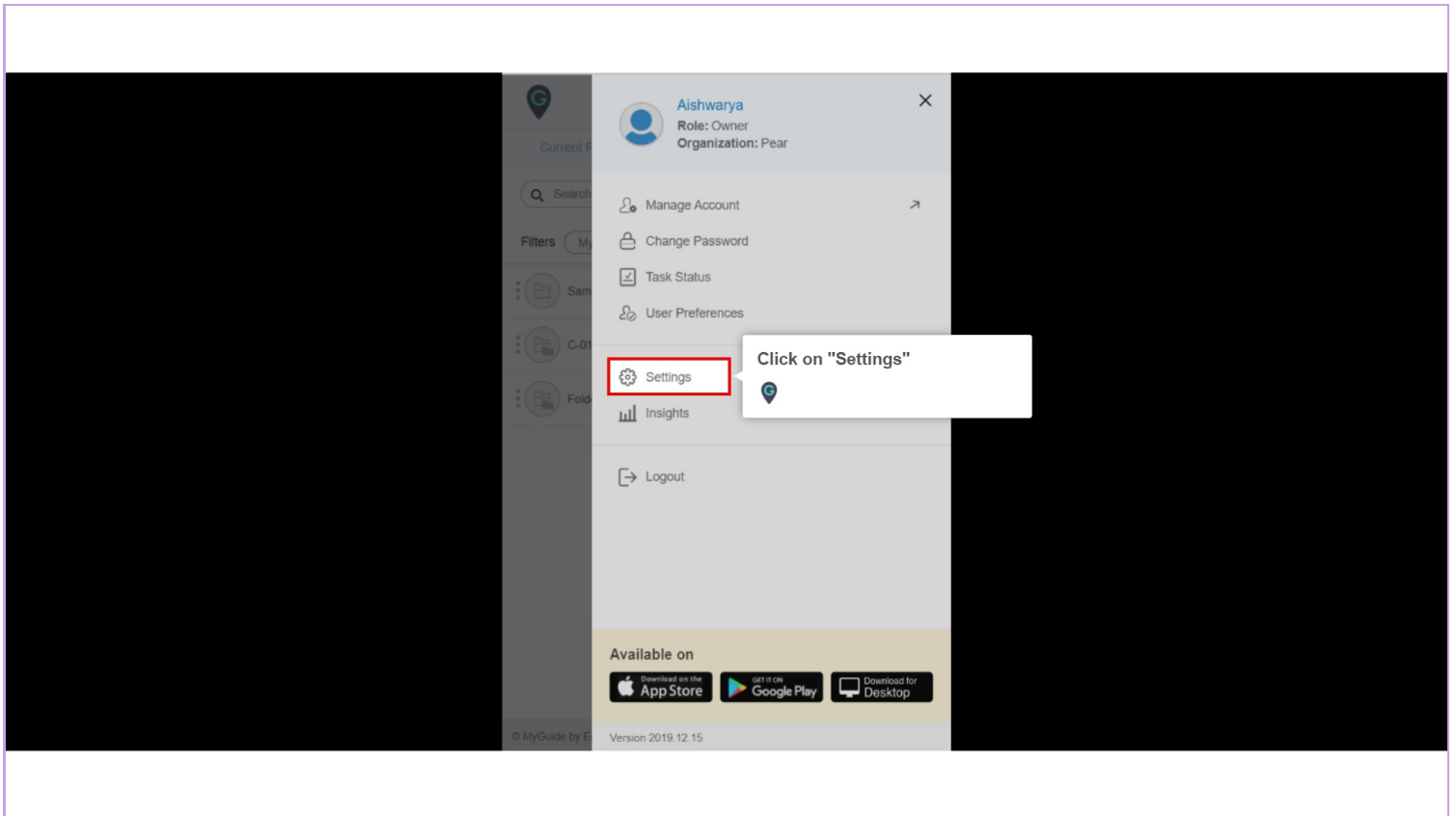
Step: 01

Click on the "Navigation Menu"



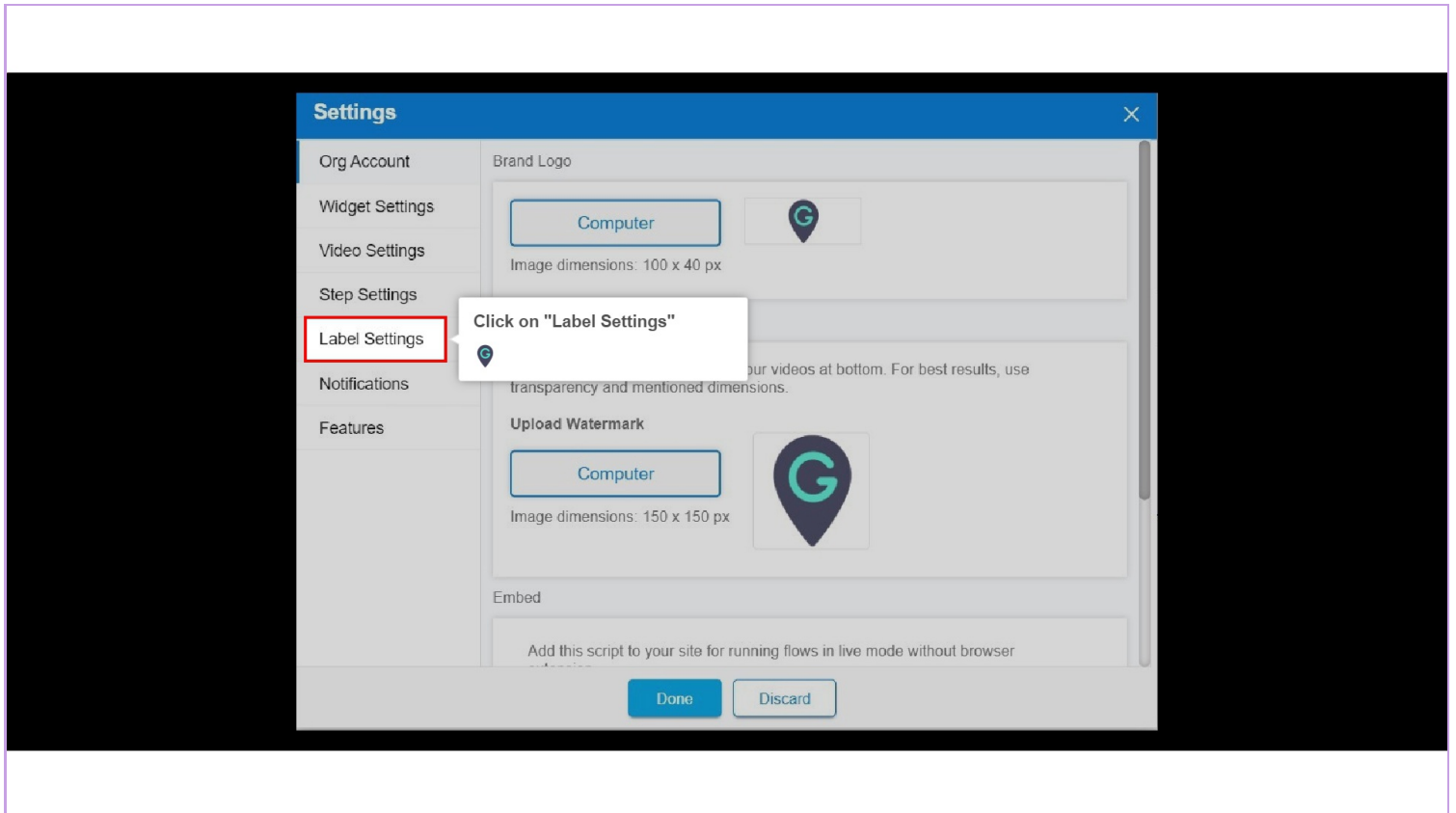
Step: 02

Click on "Settings"



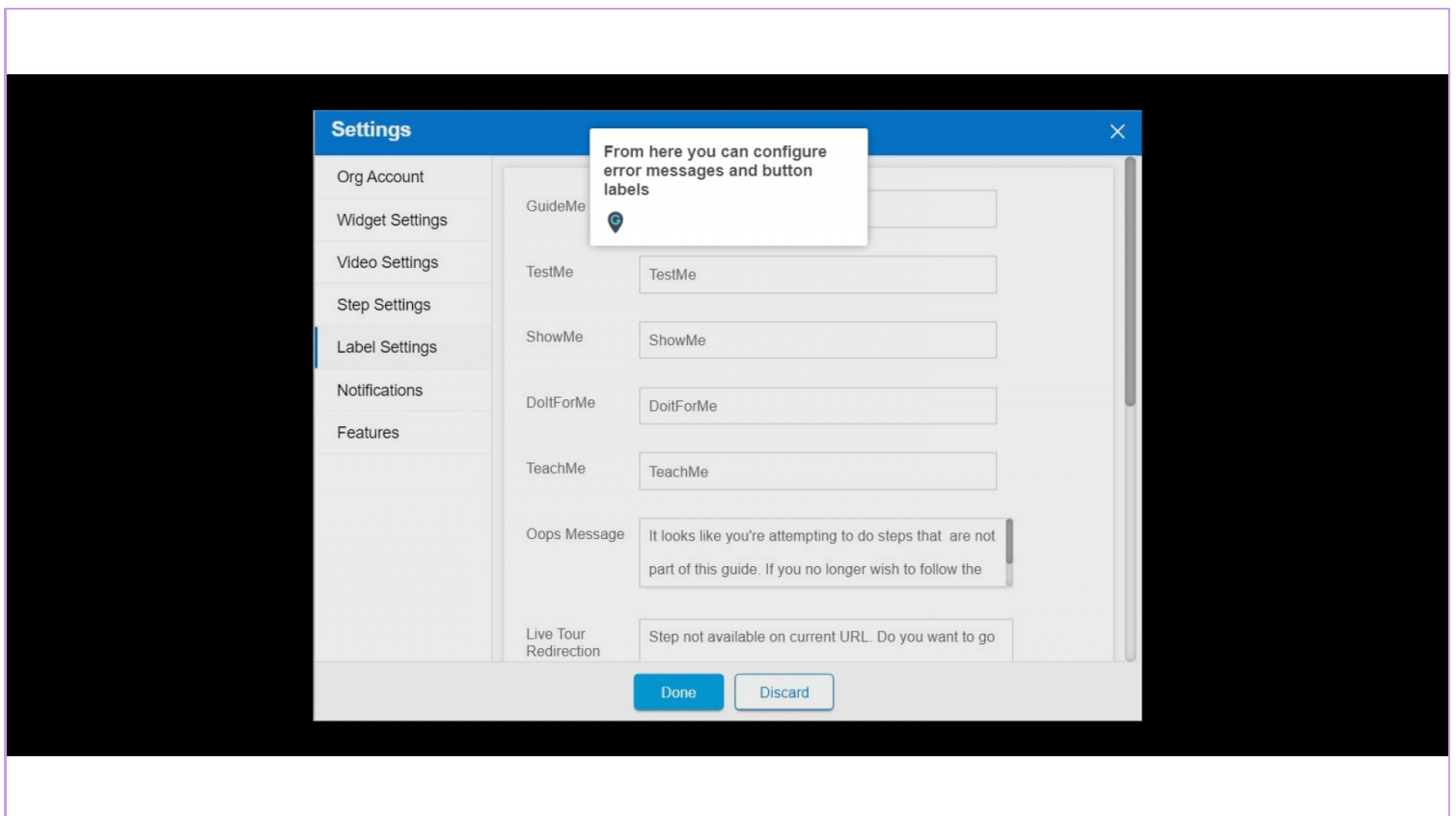
Step: 03

Click on "Label Settings"



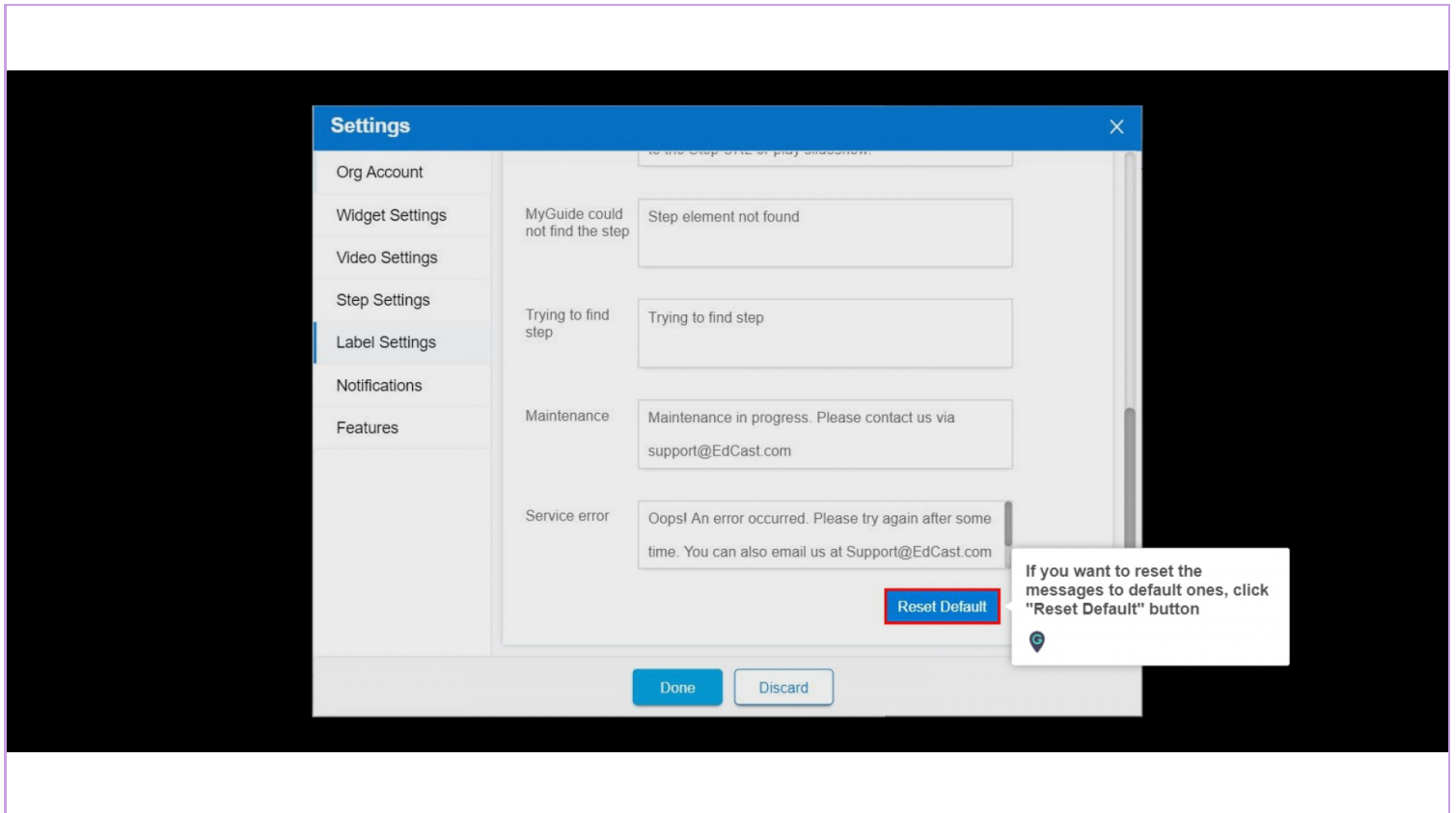
Step: 04

From here you can configure error messages and button labels



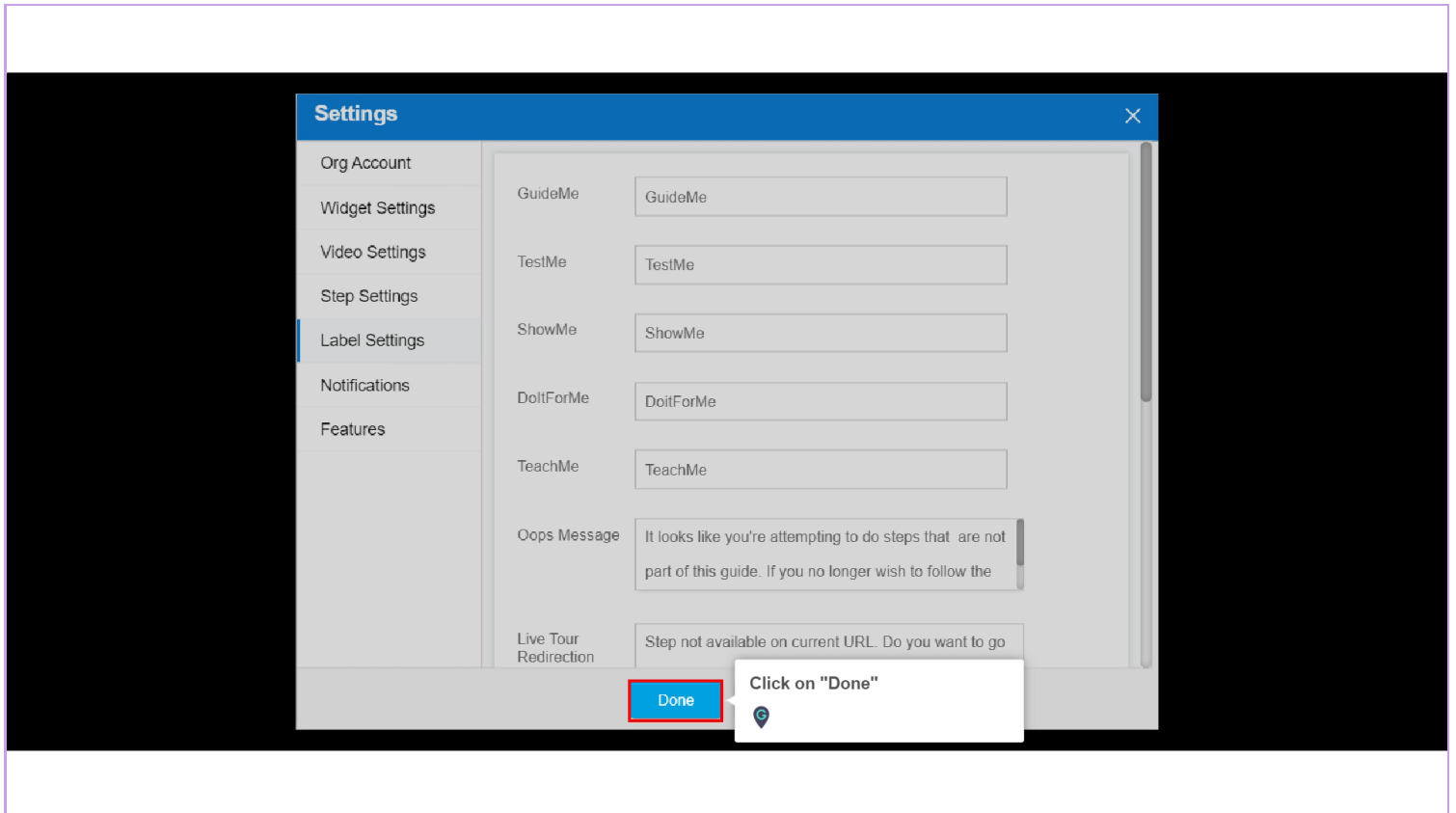
Step: 05

If you want to reset the messages to default ones, click "Reset Default" button



Step: 06

Click on "Done"



Thank You!

myguide.org