

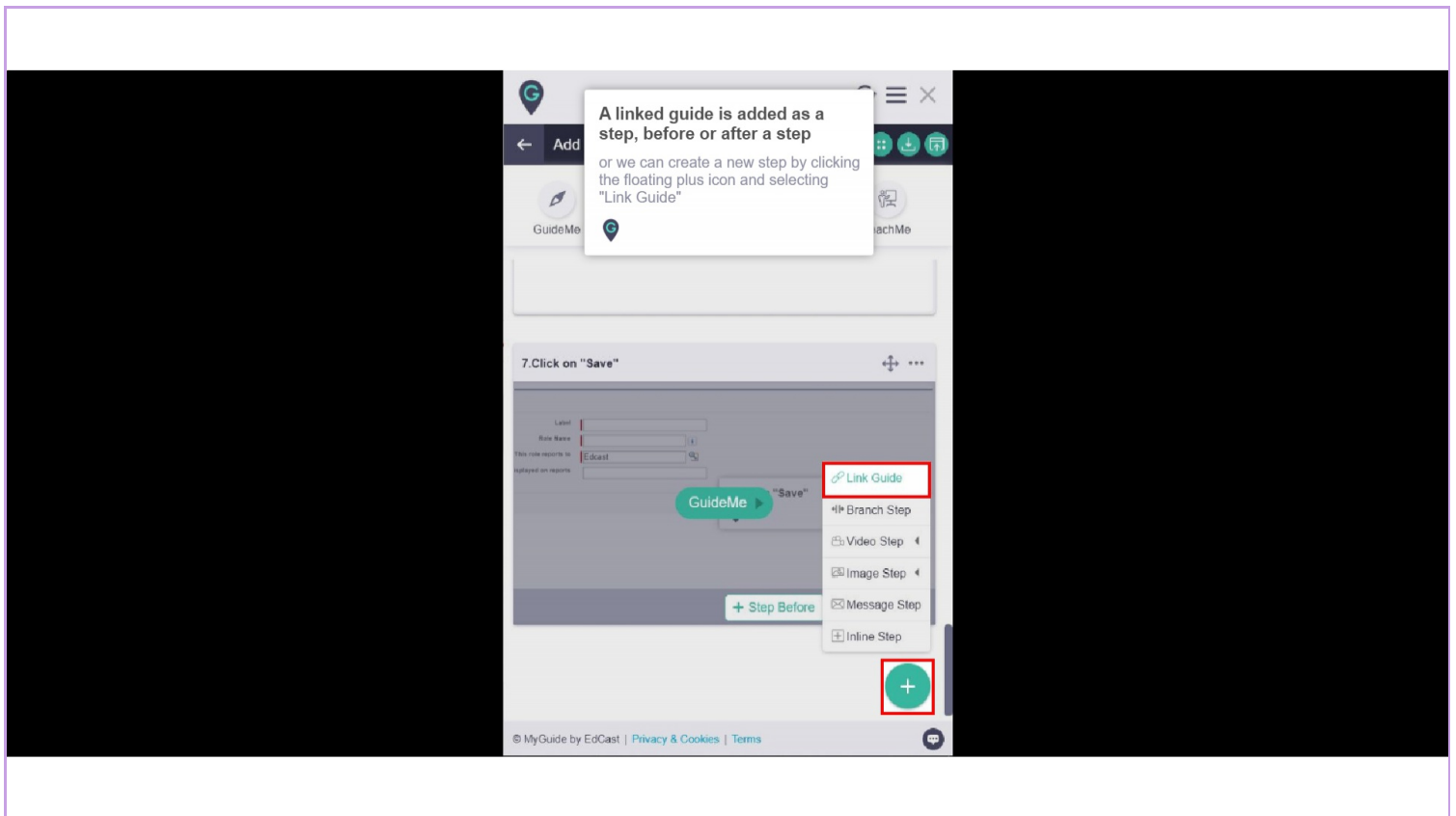


Link Guide

## Step: 01

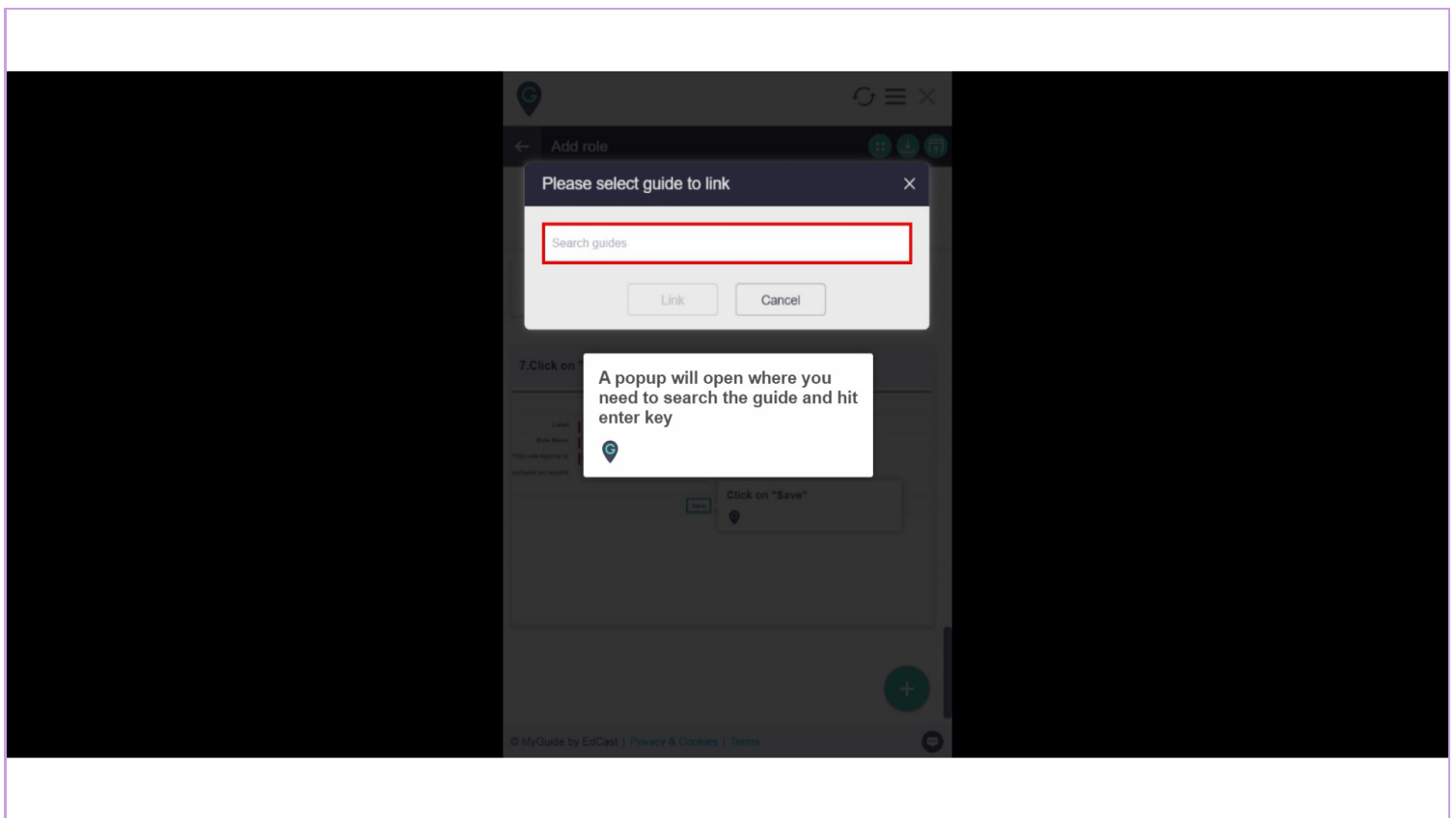
A linked guide is added as a step, before or after a step

or we can create a new step by clicking the floating plus icon and selecting "Link Guide"



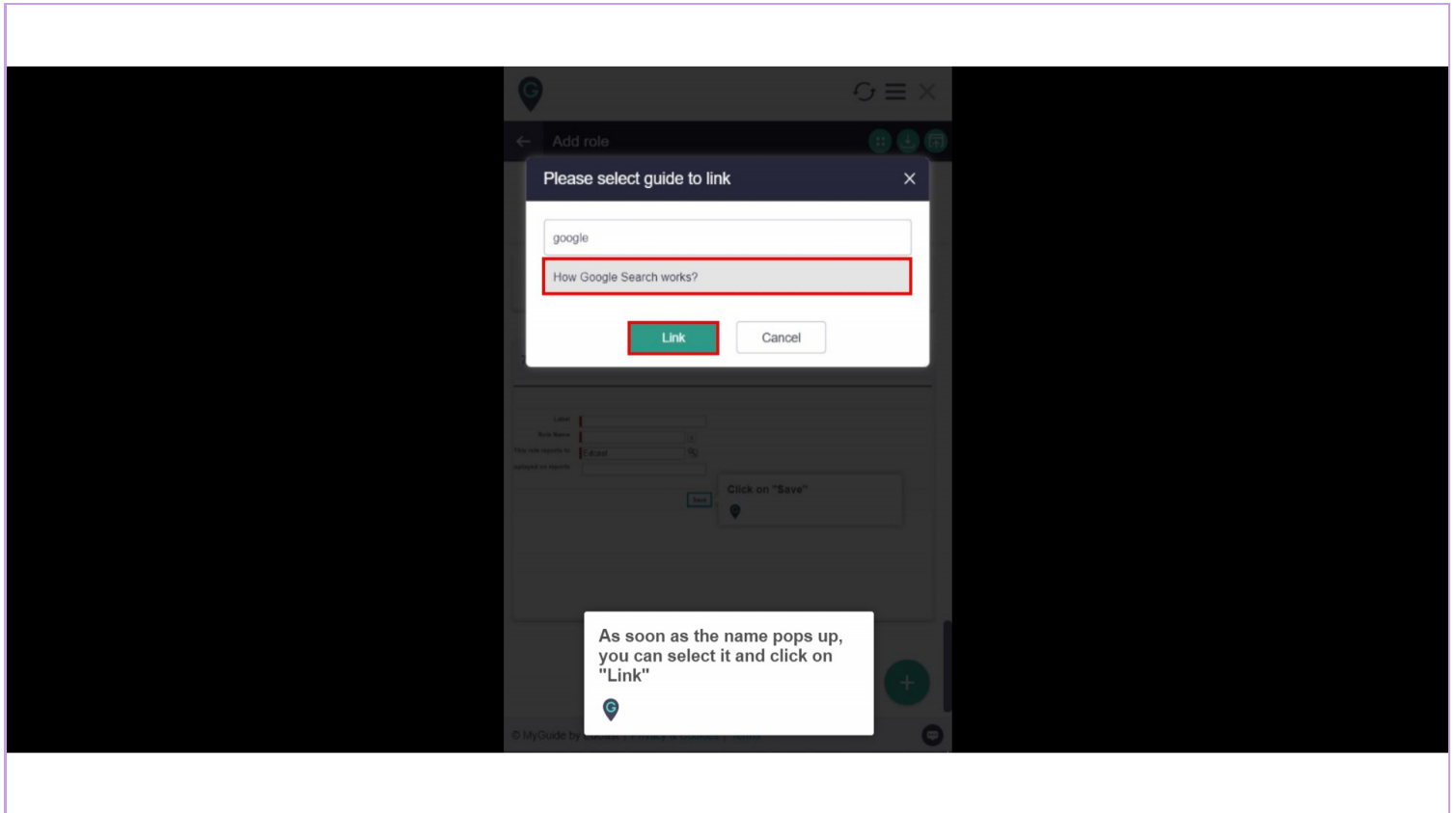
## Step: 02

A popup will open where you need to search the guide and hit enter key



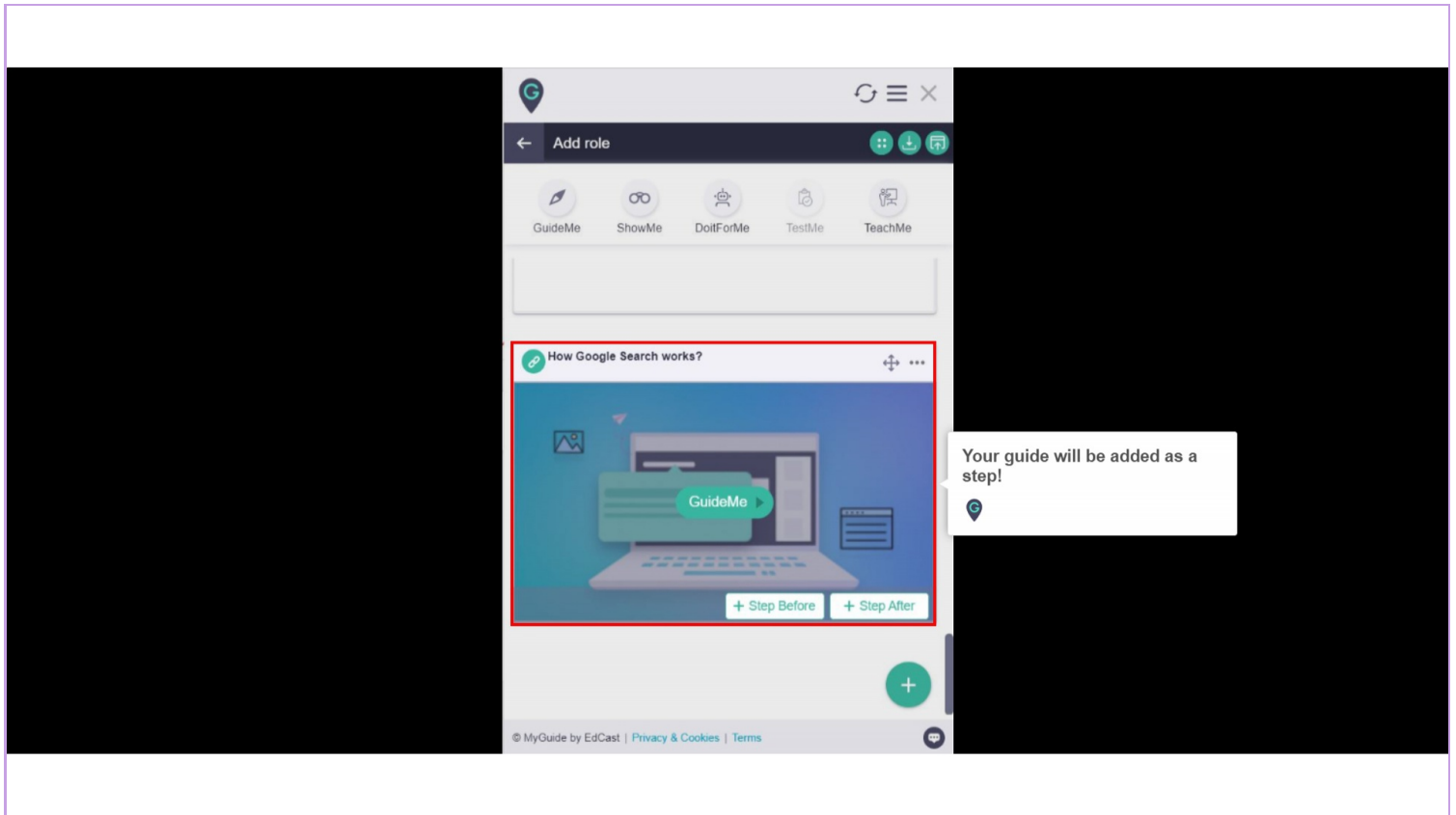
## Step: 03

As soon as the name pops up, you can select it and click on "Link"



## Step: 04

Your guide will be added as a step!



# Thank You!

[myguide.org](https://myguide.org)