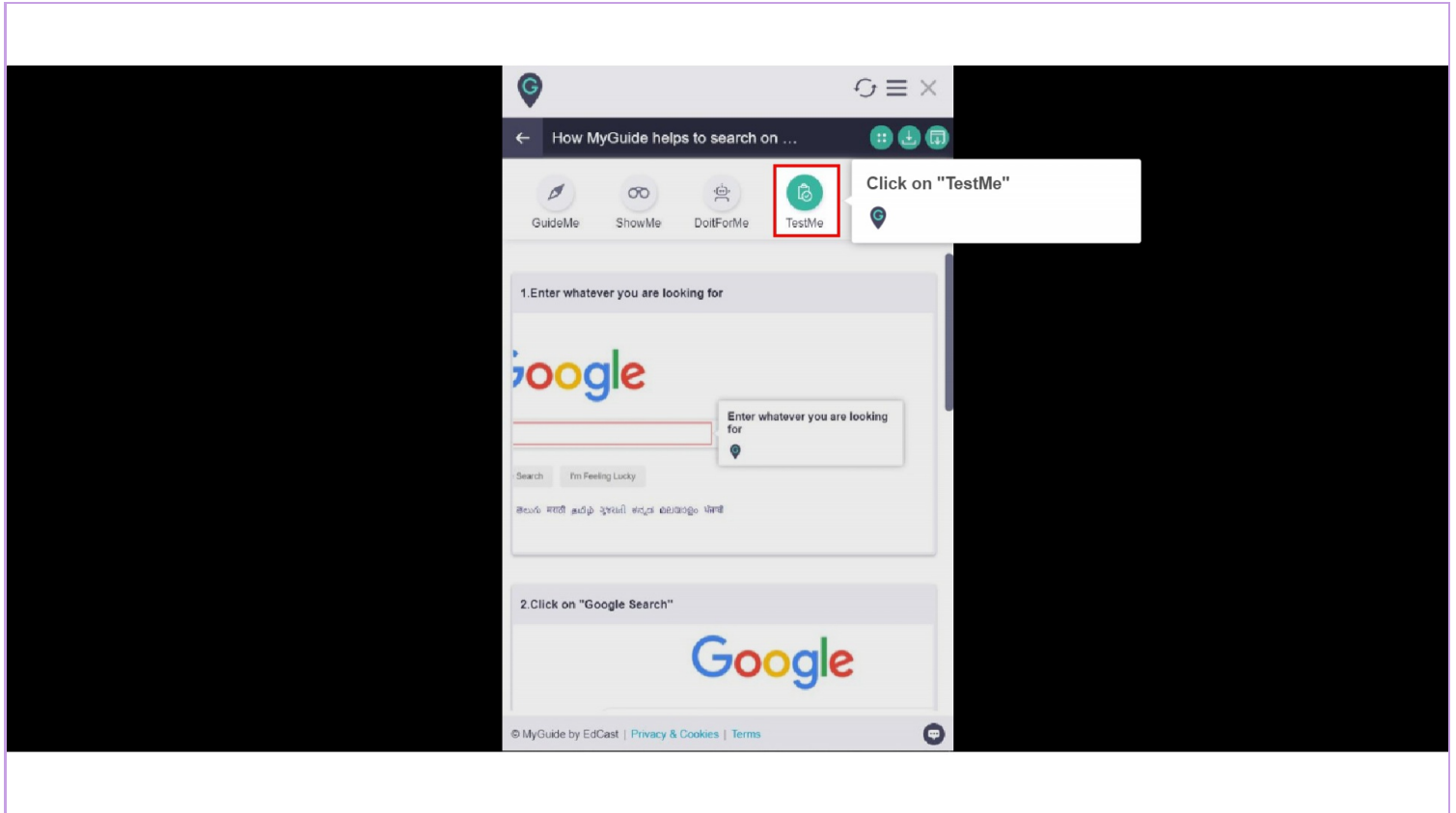




TestMe

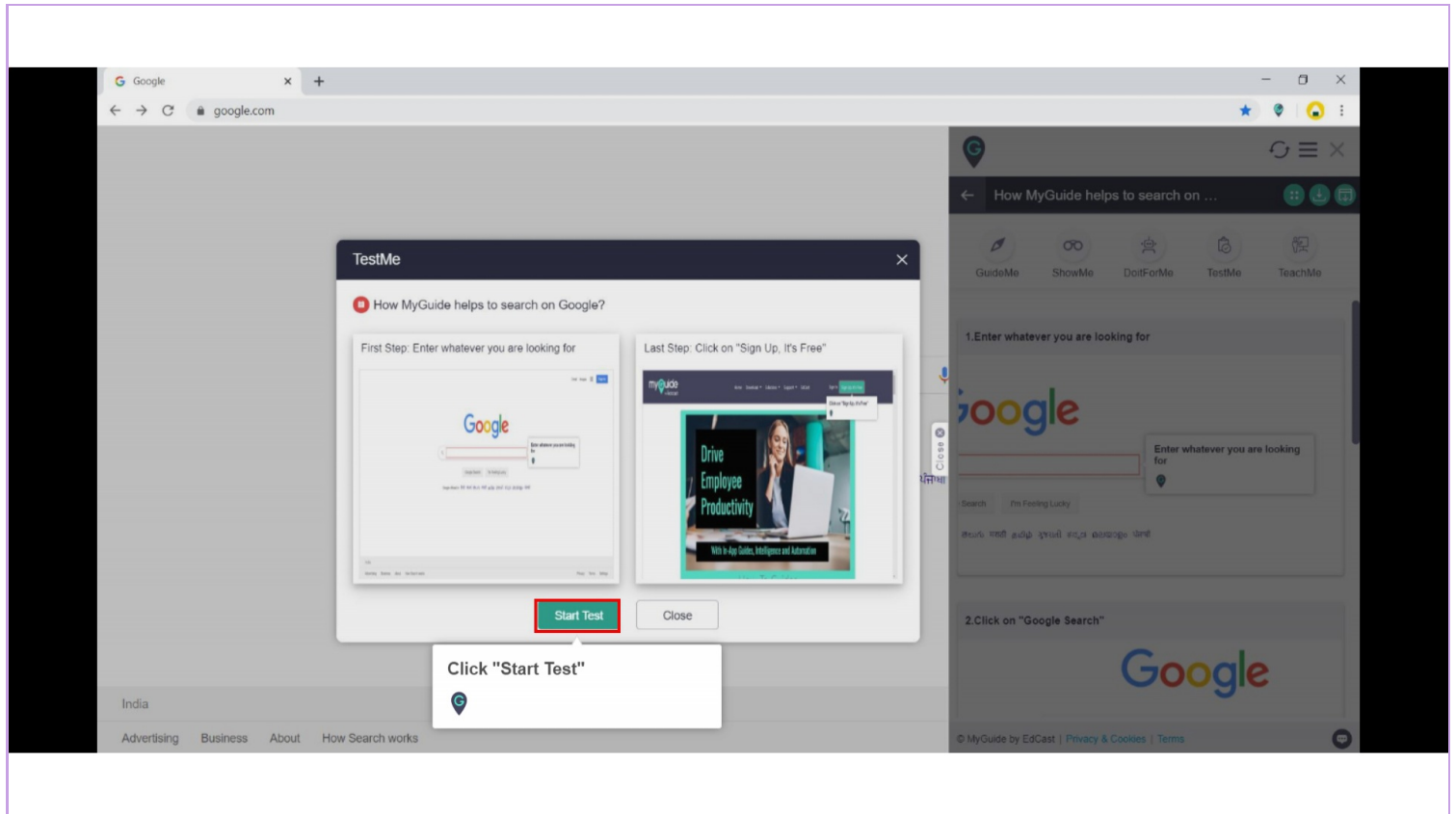
Step: 01

Click on "TestMe"



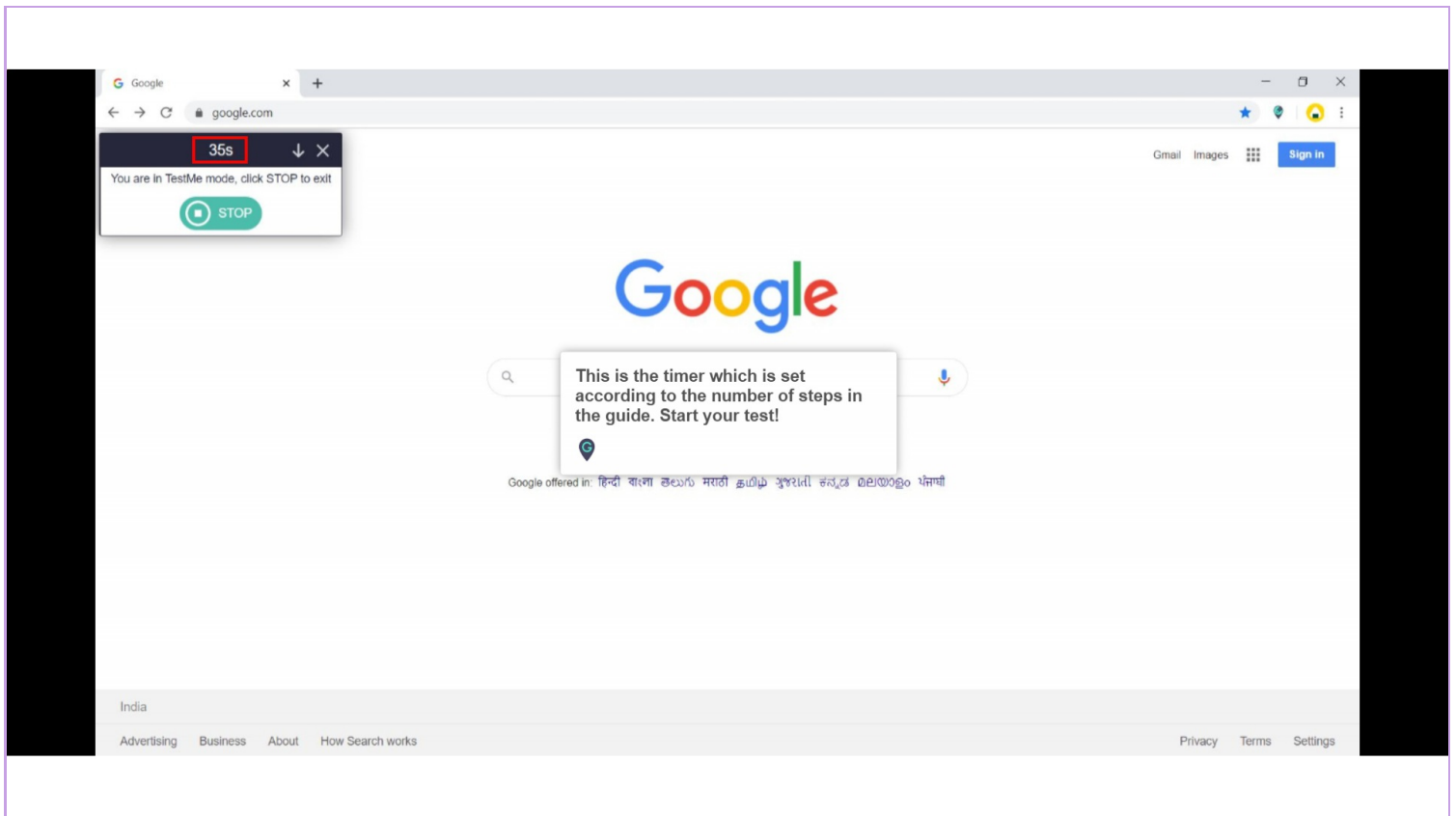
Step: 02

Click "Start Test"



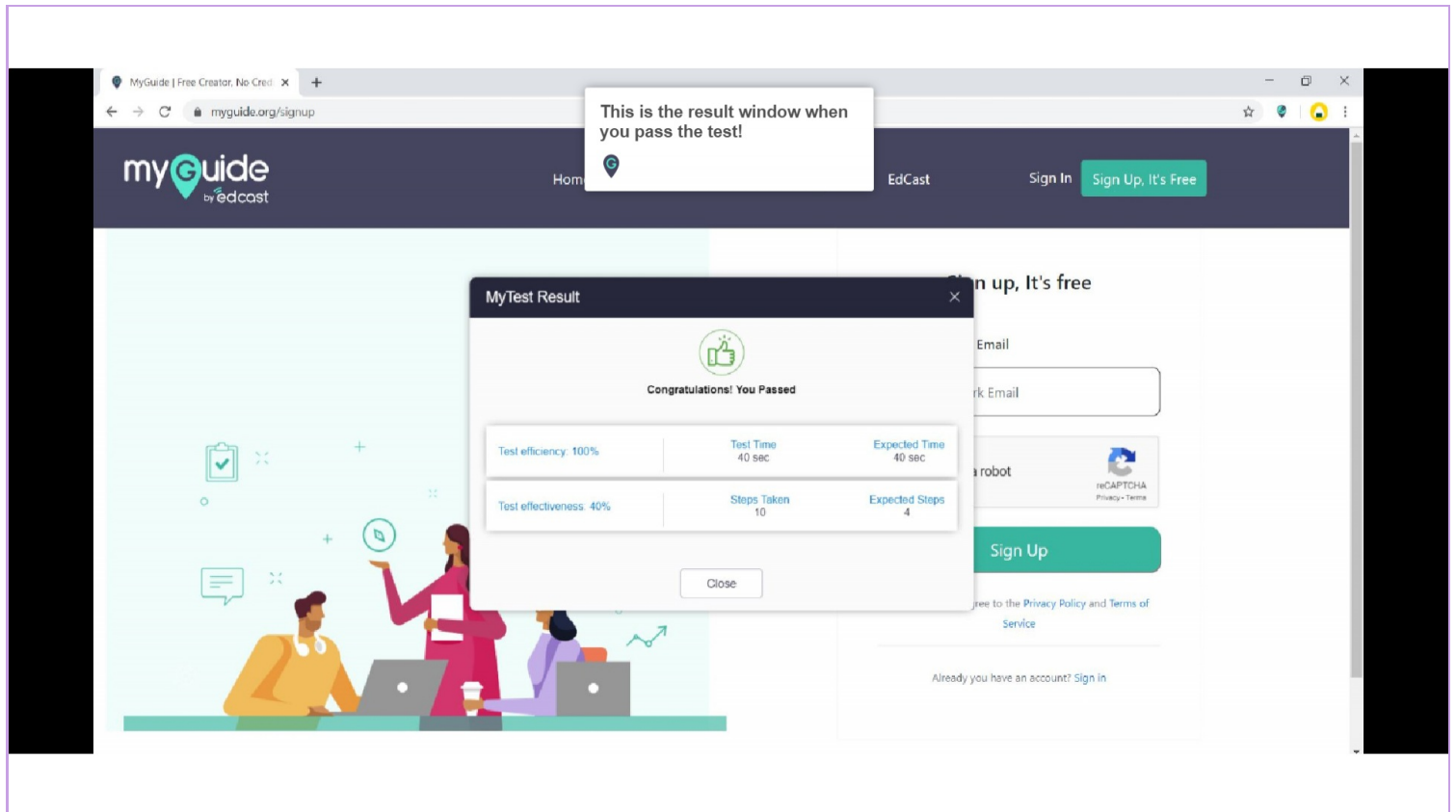
Step: 03

This is the timer which is set according to the number of steps in the guide. Start your test!



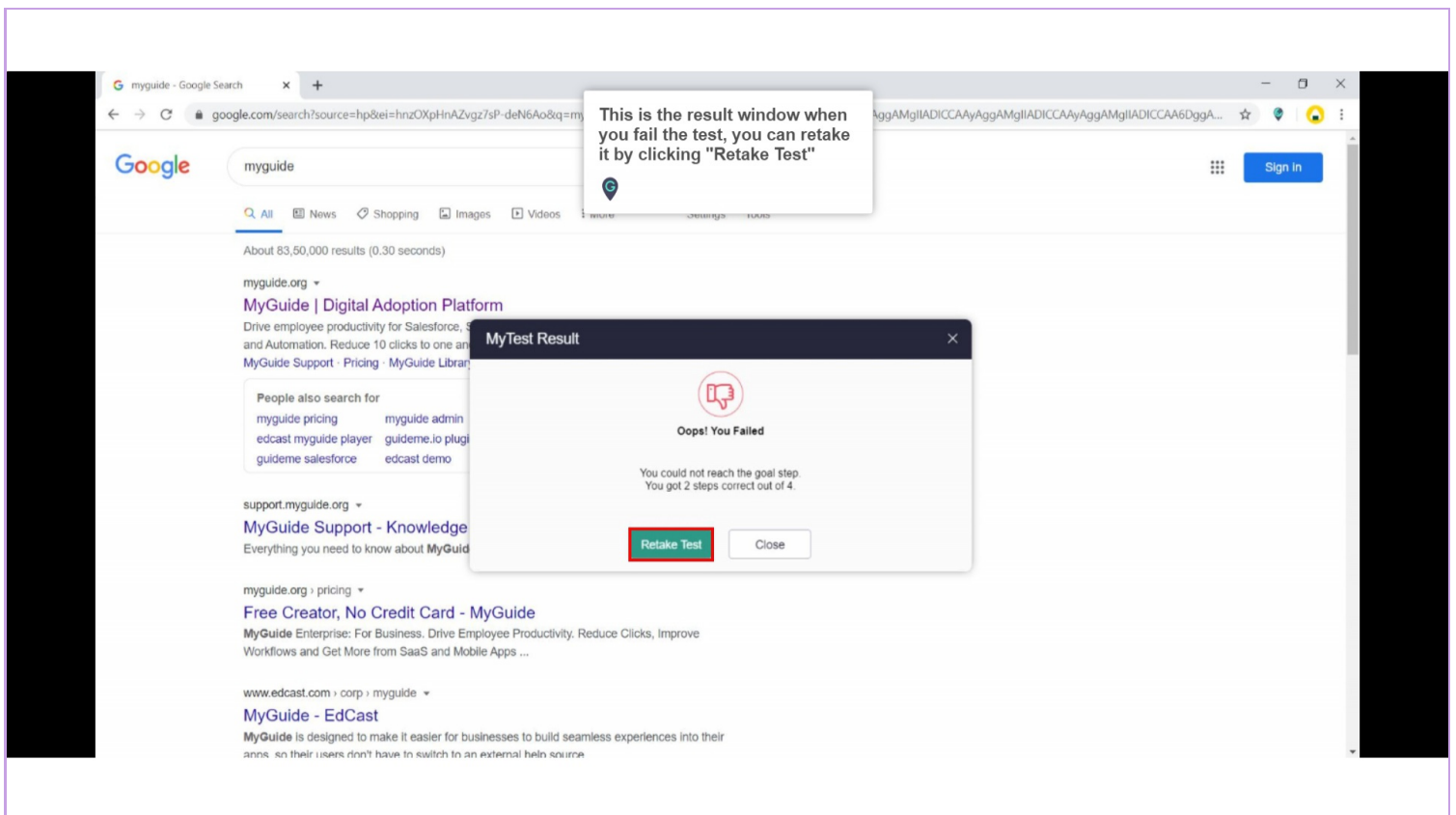
Step: 04

This is the result window when you pass the test!



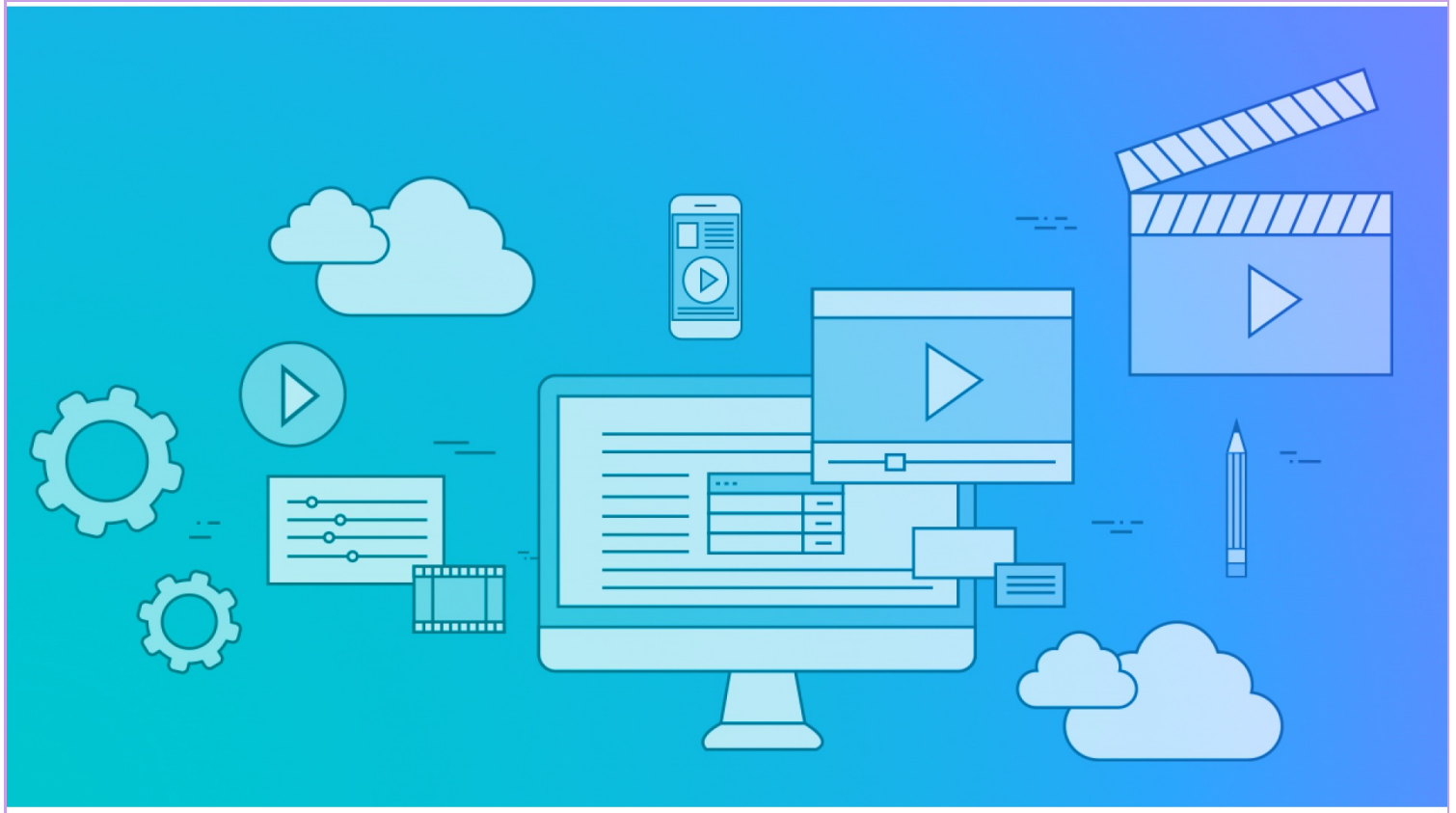
Step: 05

This is the result window when you fail the test, you can retake it by clicking "Retake Test"



Step: 06

How does TestMe mode work



Thank You!

myguide.org